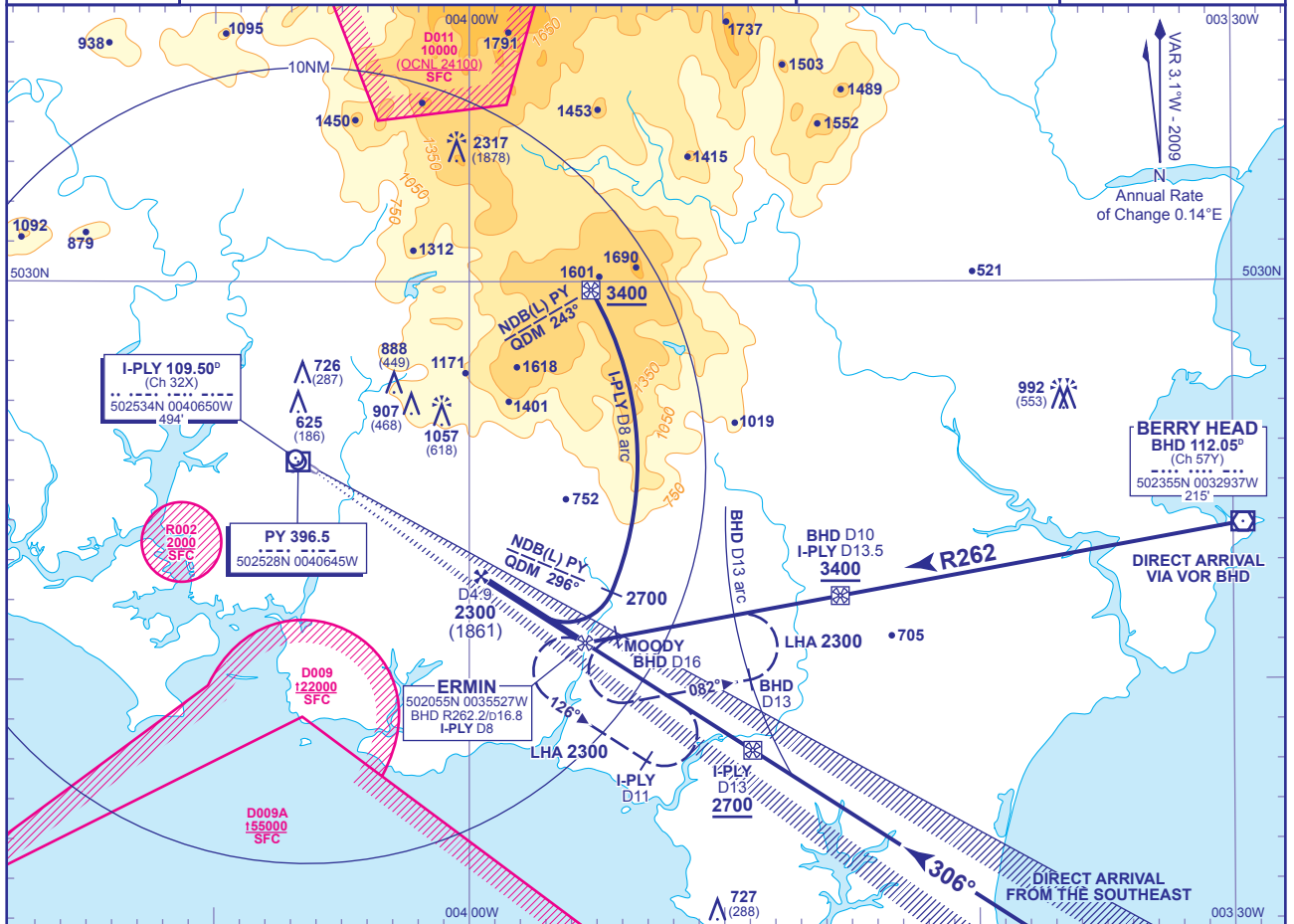


INSTRUMENT APPROACH CHART - ICAO

**PLYMOUTH**  
Direct Arrivals  
to ILS/DME  
RWY 31  
(ACFT CAT A,B)

	APP 133.550	PLYMOUTH APPROACH	AD ELEVATION 476
	TWR 118.150	PLYMOUTH TOWER	THR ELEVATION 439
			OBSTACLE ELEVATION 2317 AMSL (1878) (ABOVE THR)
			BEARINGS ARE MAGNETIC
			TRANSITION ALTITUDE 3000



**DIRECT ARRIVAL PROCEDURES**

**From the East via VOR BHD R262:**

Arrival **not below MSA** to intercept and follow VOR BHD R262. After passing IAF (VOR BHD R262, BHD DME 10, I-PLY DME 13.5), descend to 2300(1861). Approaching the IF (ERMIN, VOR BHD R262, BHD DME 16.8, I-PLY DME 8), turn right to intercept and establish on the LOC. When established, continue as for Main Procedure.

**From the Northeast via I-PLY DME 8 arc:**

Arrival **not below MSA** to intercept and establish on the I-PLY DME 8 arc clockwise. When south of the IAF (NDB(L) PY QDM 243°, I-PLY DME 8) descend to 2700. After passing lead QDM 296°, turn right to intercept LOC, descending to 2300(1861). When established, continue as for Main Procedure.

**From the Southeast via NDB(L) PY QDM 306° (LOC course):**

Arrival **not below MSA** to intercept and follow NDB(L) PY QDM 306°. After passing IAF (NDB(L) PY QDM 306°, I-PLY DME 13) descend to cross IF (ERMIN, NDB(L) PY QDM 306°, I-PLY DME 8) at 2300(1861), then continue as for Main Procedure. Aircraft requiring to hold at MOODY should join the holding pattern via BHD DME 13 arc and VOR BHD R262.

**Procedure from ERMIN Holding Pattern:**

Arrival at ERMIN **not below MSA**. Descend in hold as necessary, to be inbound to the IF (ERMIN) at 2300(1861). From the IF continue as for Main Procedure.

**NOTE 1** Aircraft on direct arrivals may be required to hold at ERMIN or MOODY.

**NOTE 2** Lowest altitude for holding at ERMIN or MOODY is 2300 (Aircraft will normally be required to hold not lower than FL40).

**NOTE 3** VOR DME BHD is **NOT** monitored at Plymouth.

**CHANGE:** MAG VAR. DIRECT ARRIVAL FROM BERRYHEAD. HOLD ON MOODY.

AERO INFO DATE 17 JUL 09