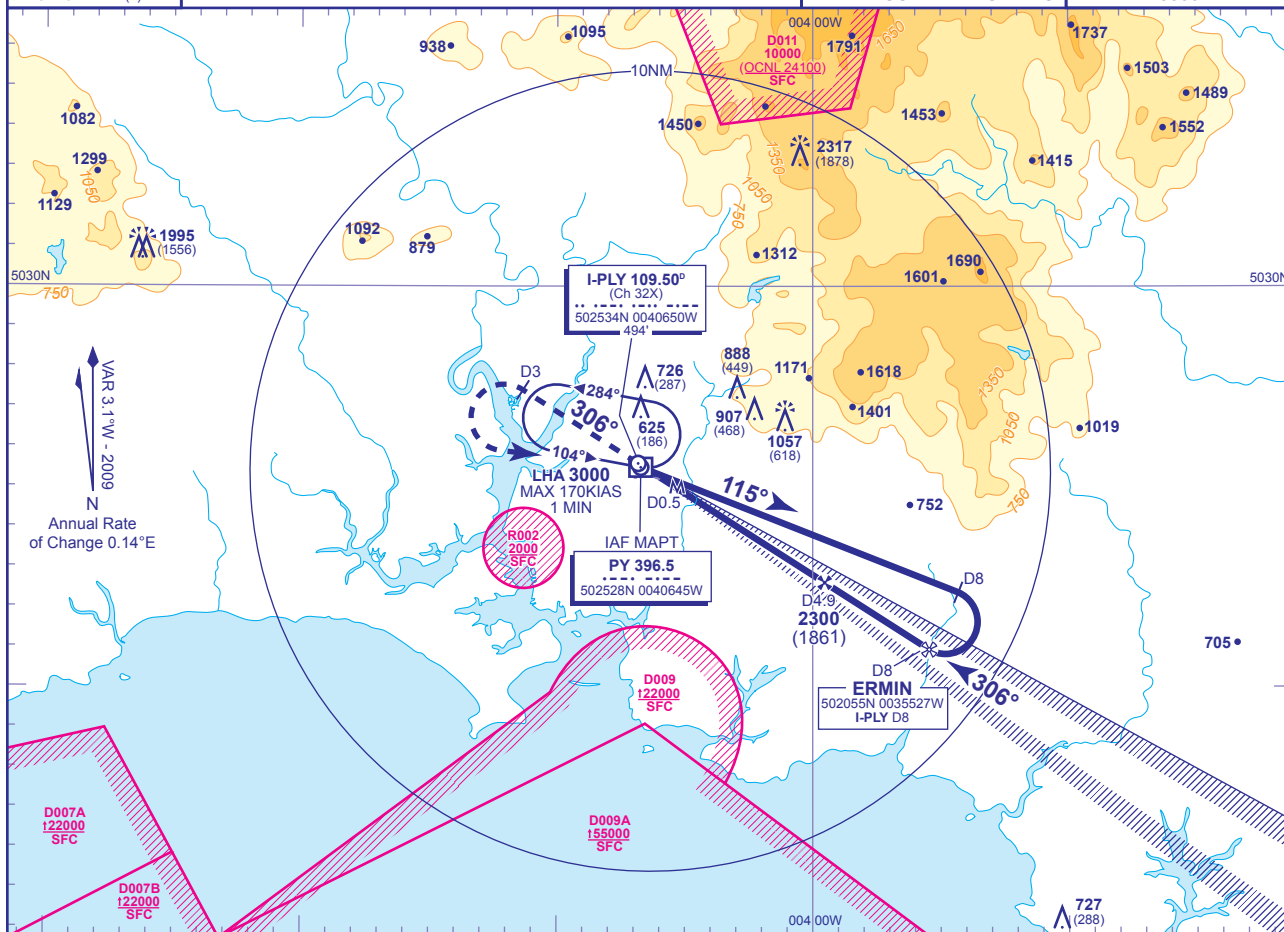


INSTRUMENT APPROACH CHART - ICAO

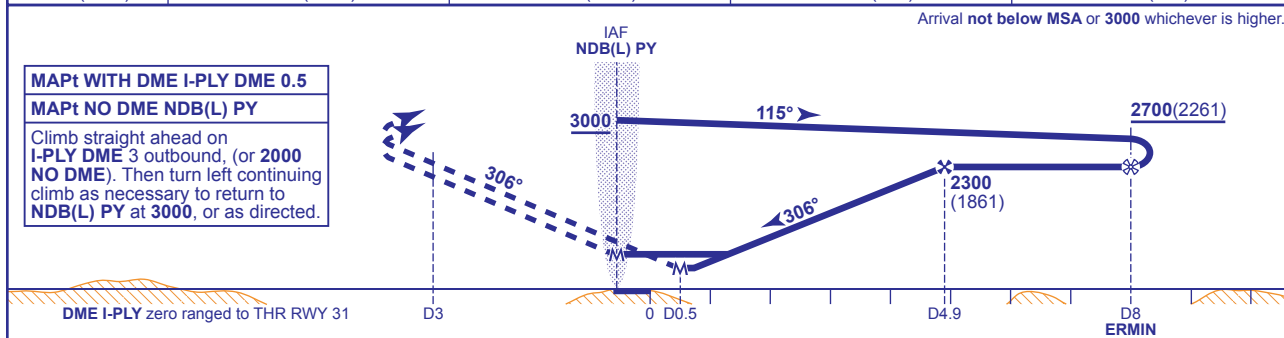
PLYMOUTH LOC/DME RWY 31
(ACFT CAT A,B)

	APP 133.550	PLYMOUTH APPROACH	AD ELEVATION 476
	TWR 118.150	PLYMOUTH TOWER	THR ELEVATION 439
			OBSTACLE ELEVATION 2317 AMSL (1878) (ABOVE THR)
			BEARINGS ARE MAGNETIC
			TRANSITION ALTITUDE 3000



RECOMMENDED PROFILE Gradient 6.1%, 372FT/NM

DME I-PLY	4	3	2	1
ALT(HGT)	1970(1531)	1590(1151)	1220(781)	850(411)



MAPt WITH DME I-PLY DME 0.5
MAPt NO DME NDB(L) PY
Climb straight ahead on I-PLY DME 3 outbound, (or 2000 NO DME). Then turn left continuing climb as necessary to return to NDB(L) PY at 3000, or as directed.

Aircraft Category		A	B	Rate of descent	G/S KT	160	140	120	100	80
OCA (OCH)	WITH DME	750(311)	770(331)		FT/MIN	990	870	740	620	500
	NO DME	950(511)	950(511)							
VM(C)OCA (OCH AAL)	Total Area	960(484)	1050(574)							

AIRCRAFT UNABLE TO RECEIVE DME
Arrival not below MSA or 3000 whichever is the higher. Overhead NDB(L) PY, not below 3000, fly outbound on (NDB(L) PY QDR 115° for 3 MIN descending to 2000(1561). Base turn right to intercept LOC. When established on LOC descend to MDH.

NOTE For ERMIN hold and direct arrivals see chart AD 2-EGHD-8-4.

CHANGE: MAG VAR. OUTBOUND TRACK.

AERO INFO DATE 17 JUL 09