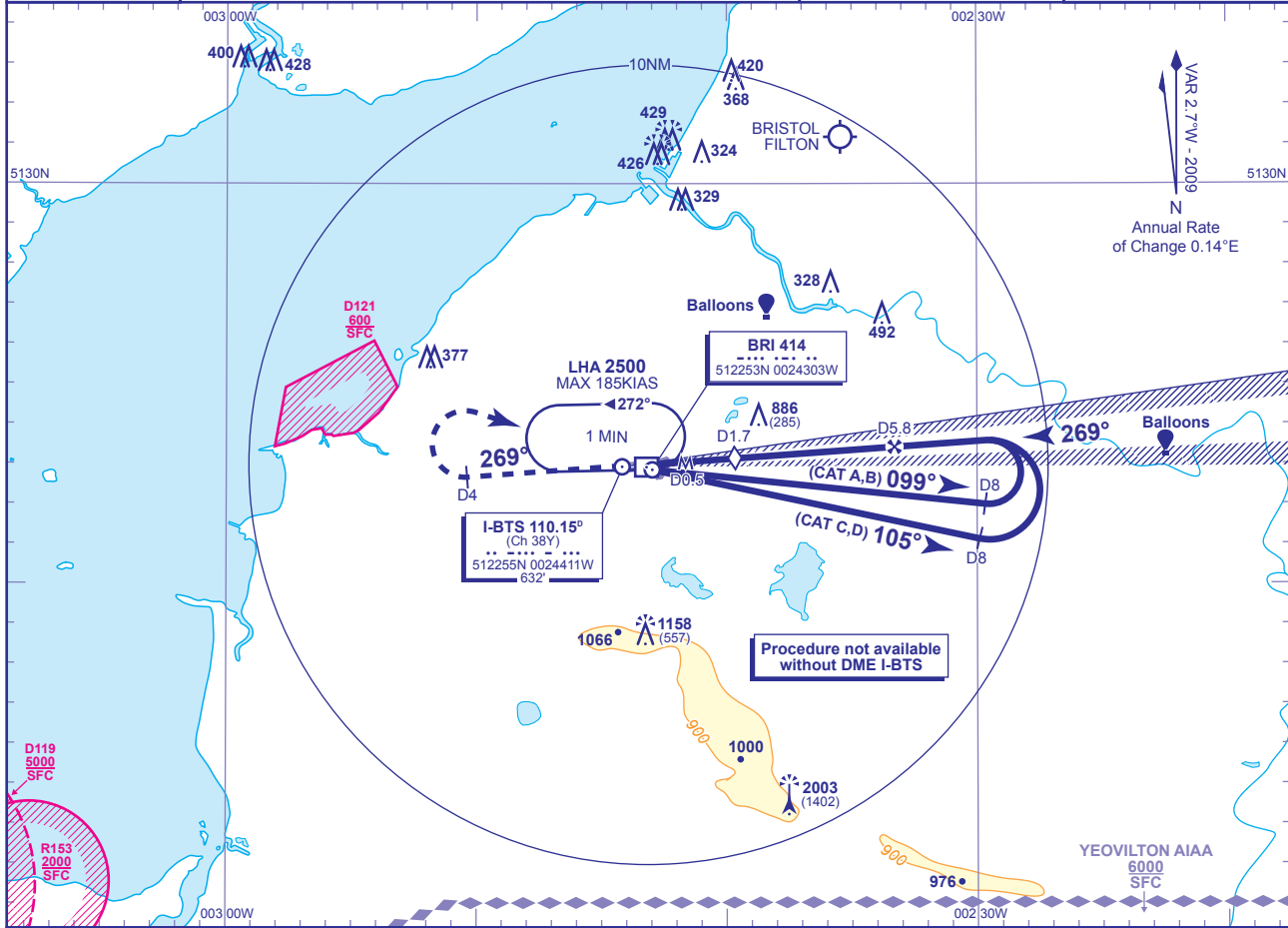


INSTRUMENT APPROACH CHART - ICAO

**BRISTOL**  
**LOC/DME/NDB(L)**  
**RWY 27**  
 (ACFT CAT A,B,C,D)

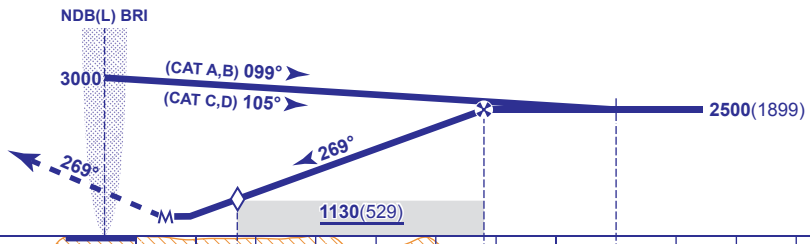
<p>MSA 25NM NDB(L) BRI</p>	TWR 133.850	BRISTOL TOWER	AD ELEVATION 622
	RAD 136.075, 125.650 (LARS)	BRISTOL RADAR	THR ELEVATION 601
	ATIS 126.025	BRISTOL INFORMATION	OBSTACLE ELEVATION 2003 AMSL (1402) (ABOVE THR)
			BEARINGS ARE MAGNETIC
TRANSITION ALTITUDE <b>6000</b>			



RECOMMENDED PROFILE Gradient 5.2%, 320FT/NM

DME I-BTS	5	4	3	2	1
ALT(HGT)	2240(1639)	1920(1319)	1610(1009)	1290(689)	970(369)

**MAPt I-BTS DME 0.5**  
 Climb straight ahead to 3000 then as directed.  
 RCF: Climb straight ahead at I-BTS DME 4 turn right to NDB(L) BRI at 3000.



		DME I-BTS zero ranged to THR RWY 27										
<b>Aircraft Category</b>		A	B	C	D	<b>Rate of descent</b>	G/S KT	160	140	120	100	80
<b>OCA (OCH)</b>	<b>Procedure</b>	910(309)	910(309)	910(309)	910(309)		FT/MIN	850	740	640	530	430
<b>VM(C)OCA (OCH AAL)</b>	<b>Total Area</b>	1050(428)	1260(638)	1460(838)	1560(938)							
	<b>North of RWY 09/27</b>	1050(428)	1260(638)	1360(738)	1360(738)							

**NOTES**  
 1 Lowest altitude to commence procedure from hold is 2500.  
 2 Maximum KIAS for procedure is 110KIAS (CAT A); 140KIAS (CAT B); 185KIAS (CAT C,D).

CHANGE: MAG VAR. PROCEDURE. VM(C)OCA CAT C. OBSTACLES. NOTE. RECOMMENDED PROFILE. MOCA BOX. NAV AID COORDINATE.