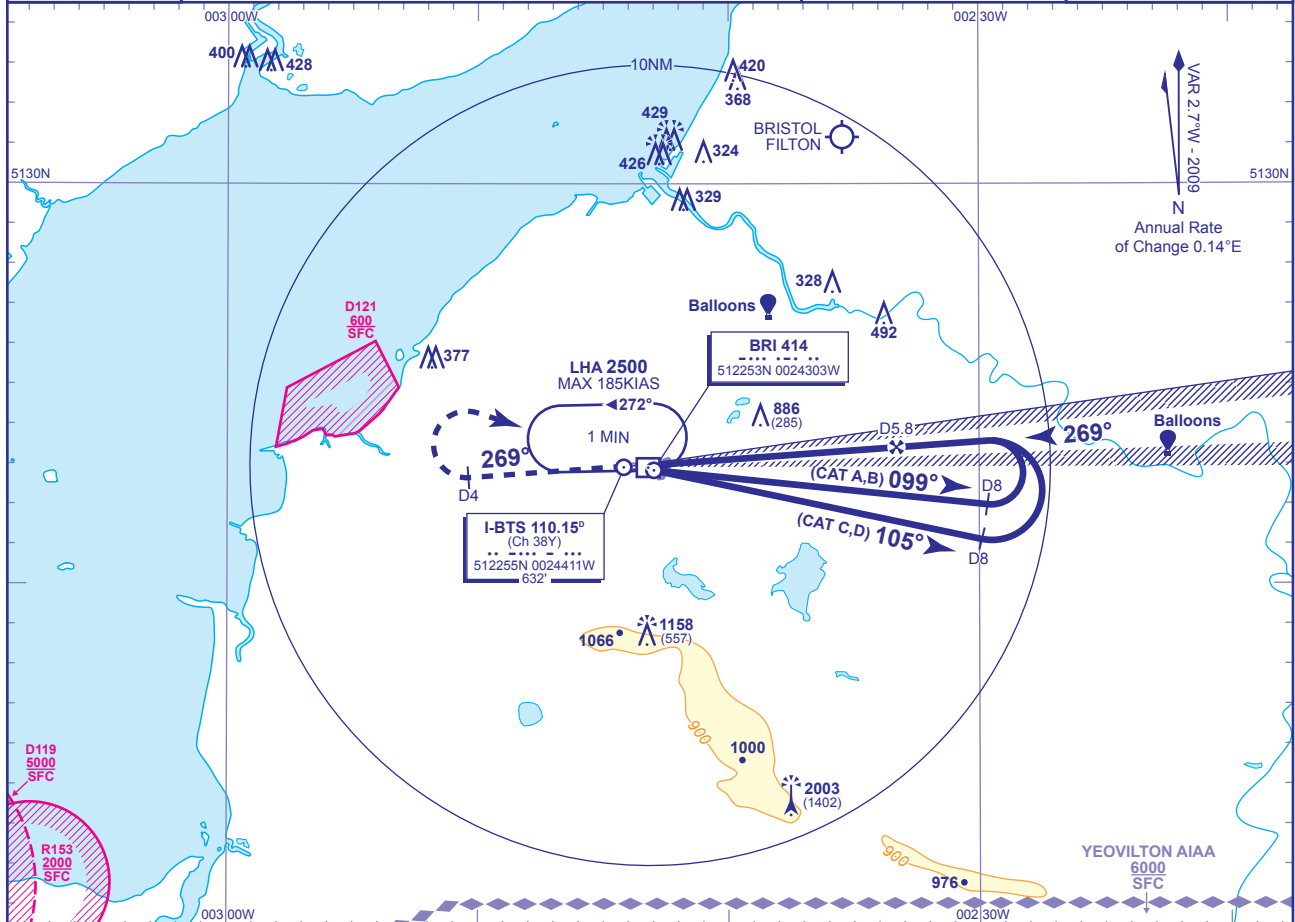


**INSTRUMENT APPROACH CHART - ICAO**

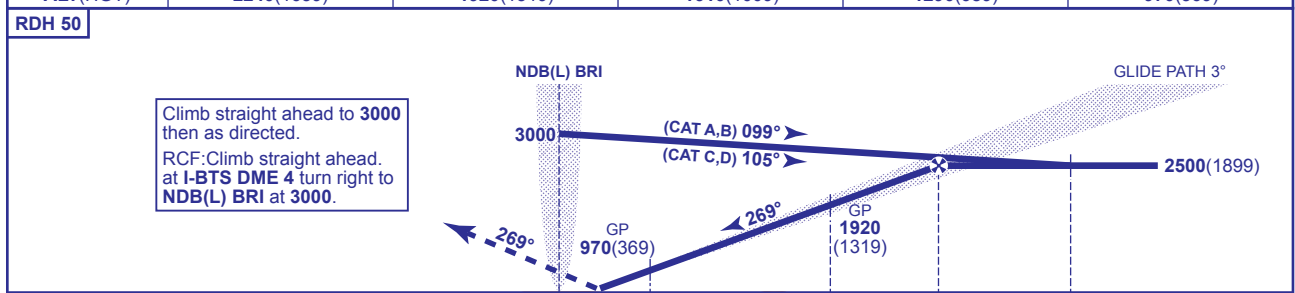
**BRISTOL ILS/DME/NDB(L) RWY 27**  
(ACFT CAT A,B,C,D)

	TWR 133.850	BRISTOL TOWER	AD ELEVATION 622
	RAD 136.075, 125.650 (LARS)	BRISTOL RADAR	THR ELEVATION 601
	ATIS 126.025	BRISTOL INFORMATION	OBSTACLE ELEVATION 2003 AMSL (1402) (ABOVE THR)
			BEARINGS ARE MAGNETIC
TRANSITION ALTITUDE 6000			



**RECOMMENDED PROFILE GLIDE PATH 3°, 320FT/NM**

DME I-BTS	5	4	3	2	1
ALT(HGT)	2240(1639)	1920(1319)	1610(1009)	1290(689)	970(369)



DME I-BTS zero ranged to THR RWY 27

Aircraft Category	DME I-BTS				Rate of descent	G/S KT FT/MIN	160	140	120	100	80
	A	B	C	D							
OCA (OCH)	CAT I	750(149)	759(158)	768(167)	779(178)	850	740	640	530	430	
	CAT II	664(63)	672(71)	682(81)	694(93)						
VM(C)OCA (OCH AAL)	Total Area	1050(428)	1260(638)	1460(838)	1560(938)						
	North of RWY 09/27	1050(428)	1260(638)	1360(738)	1360(738)						

**AIRCRAFT UNABLE TO RECEIVE DME I-BTS**  
Advise ATC. Radar Ranges will be provided at 8NM outbound and at 6NM and 4NM inbound.

- NOTES**
- Lowest altitude to commence procedure from hold is 2500.
  - Maximum KIAS for procedure is 110KIAS (CAT A); 140KIAS (CAT B); 185KIAS (CAT C,D).

**CHANGE:** MAG VAR. PROCEDURE. OCA. VM(C)OCA CAT C. OBSTACLES. RECOMMENDED PROFILE. NOTE 2. D121 CORRECTION. NAV AID COORDINATE.