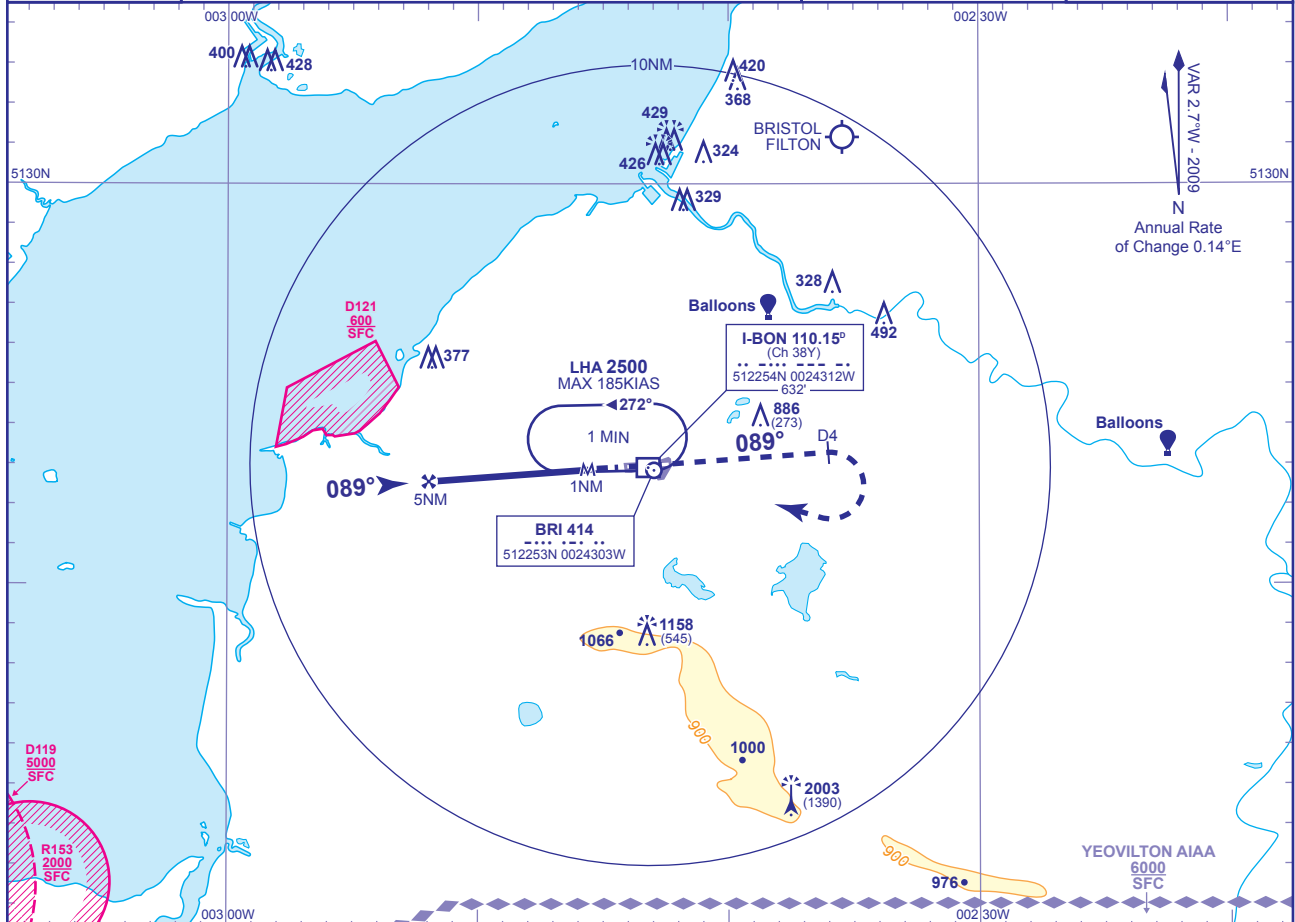


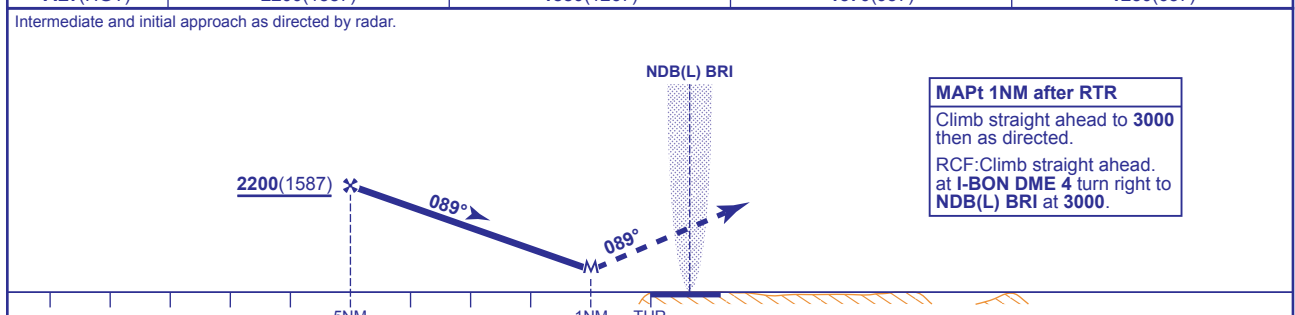
**INSTRUMENT APPROACH CHART - ICAO**

**BRISTOL**  
**SRA RTR 2NM**  
**RWY 09**  
 (ACFT CAT A,B,C,D)

	TWR 133.850	BRISTOL TOWER	AD ELEVATION 622
	RAD 136.075, 125.650 (LARS)	BRISTOL RADAR	THR ELEVATION 613
	ATIS 126.025	BRISTOL INFORMATION	OBSTACLE ELEVATION 2003 AMSL (1390) (ABOVE THR)
MSA 25NM NDB(L) BRI			BEARINGS ARE MAGNETIC
			TRANSITION ALTITUDE 6000



RADAR ADVISORY HEIGHTS Gradient 5.2%, 320FT/NM				
NM	5.0	4.0	3.0	2.0
ALT(HGT)	2200(1587)	1880(1267)	1570(957)	1250(637)



Aircraft Category	A	B	C	D	Rate of descent	G/S KT	160	140	120	100	80
OCA (OCH)	Procedure	930(317)	930(317)	930(317)	930(317)	FT/MIN	850	740	630	530	420
							MIN:SEC	0:22	0:25	0:30	0:36
VM(C)OCA (OCH AAL)	Total Area	1050(428)	1260(638)	1460(838)	1560(938)						
	North of RWY 09/27	1050(428)	1260(638)	1360(738)	1360(738)						

**NOTE** DME I-BON zero ranged to THR RWY 09.

CHANGE: MAG VAR. PROCEDURE. OCA. VM(C)OCA CAT C. OBSTACLES.

AERO INFO DATE 17 NOV 09