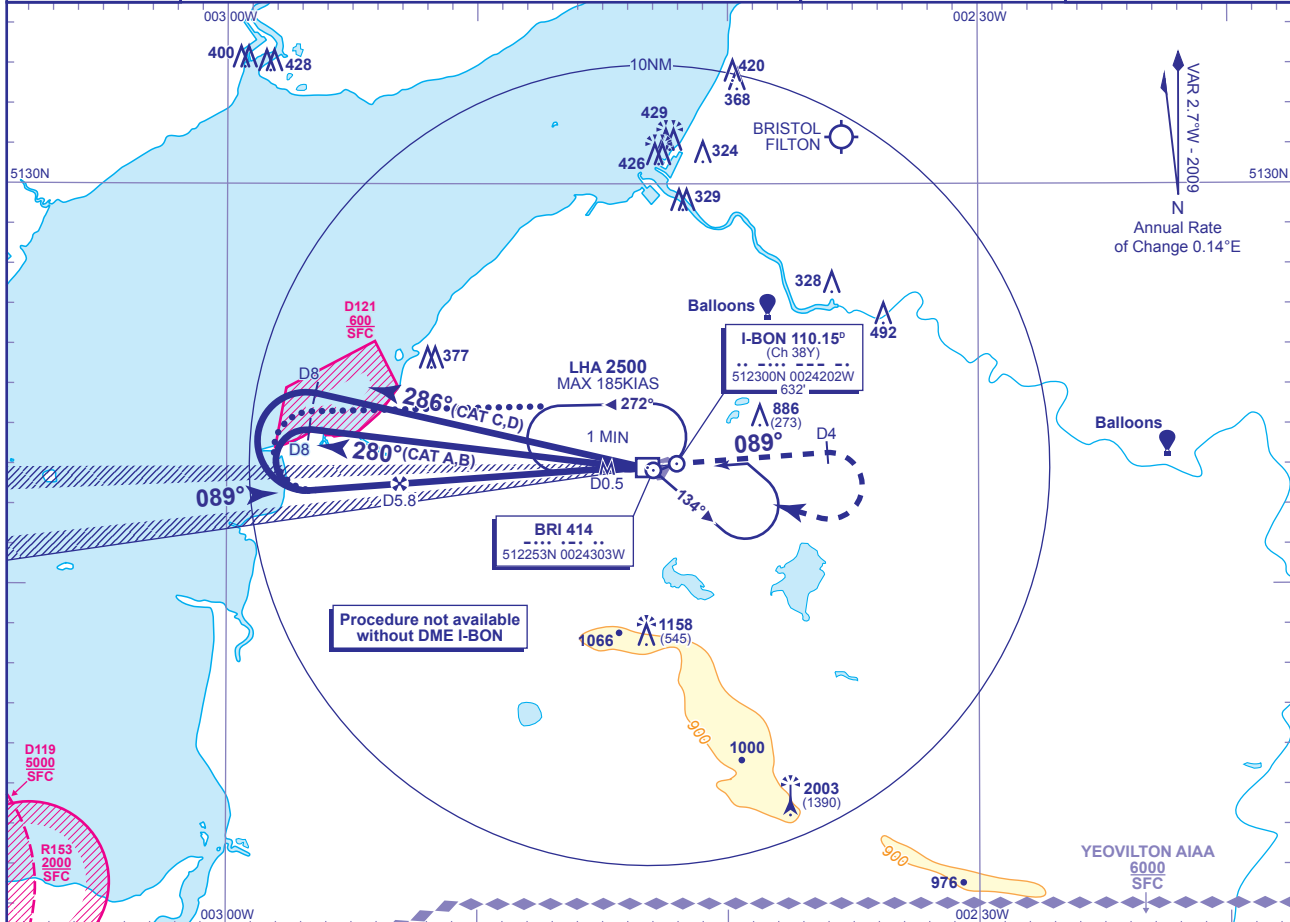


INSTRUMENT APPROACH CHART - ICAO

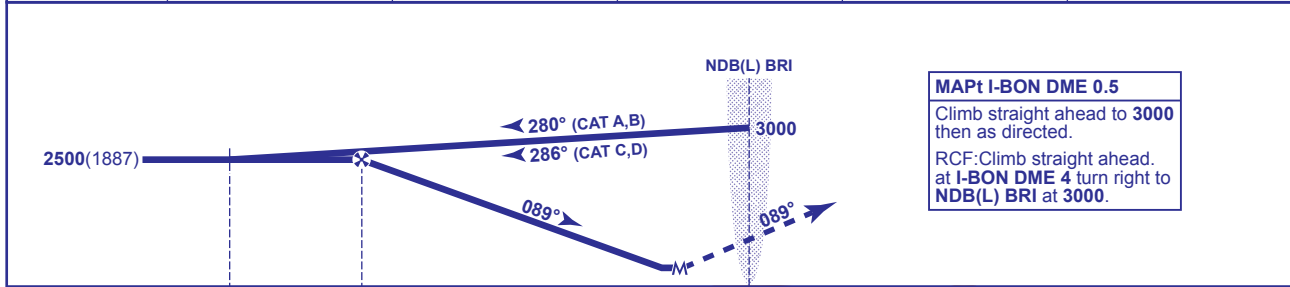
BRISTOL
LOC/DME/NDB(L)
RWY 09
 (ACFT CAT A,B,C,D)

<p>MSA 25NM NDB(L) BRI</p>	TWR 133.850	BRISTOL TOWER	AD ELEVATION 622
	RAD 136.075, 125.650 (LARS)	BRISTOL RADAR	THR ELEVATION 613
	ATIS 126.025	BRISTOL INFORMATION	OBSTACLE ELEVATION 2003 AMSL (1390) (ABOVE THR)
			BEARINGS ARE MAGNETIC
TRANSITION ALTITUDE 6000			



RECOMMENDED PROFILE Gradient 5.2%, 320FT/NM

DME I-BON	5	4	3	2	1
ALT(HGT)	2260(1647)	1940(1327)	1620(1007)	1310(697)	990(377)



Aircraft Category		A	B	C	D	Rate of descent	G/S KT	160	140	120	100	80
OCA (OCH)	Procedure	900(287)	900(287)	900(287)	900(287)		FT/MIN	850	740	640	530	420
VM(C)OCA (OCH AAL)	Total Area	1050(428)	1260(638)	1460(838)	1560(938)							
	North of RWY 09/27	1050(428)	1260(638)	1360(738)	1360(738)							

ALTERNATIVE PROCEDURE EXTENDED HOLDING PATTERN
 Overhead NDB(L) BRI at 3000 in holding pattern, turn left and descend on the extended outbound leg to 2500. At I-BON DME 8 turn left to intercept LOC inbound. Then continue as for basic procedure.

NOTES
 1 Lowest altitude to commence procedure from hold is 2500.
 2 Maximum KIAS for procedure is 110KIAS (CAT A); 140KIAS (CAT B); 185KIAS (CAT C,D).

CHANGE: MAG VAR. PROCEDURE. OBSTACLES. VM(C)OCA CAT C. NOTE 2. ROD. NAV AID COORDINATES.