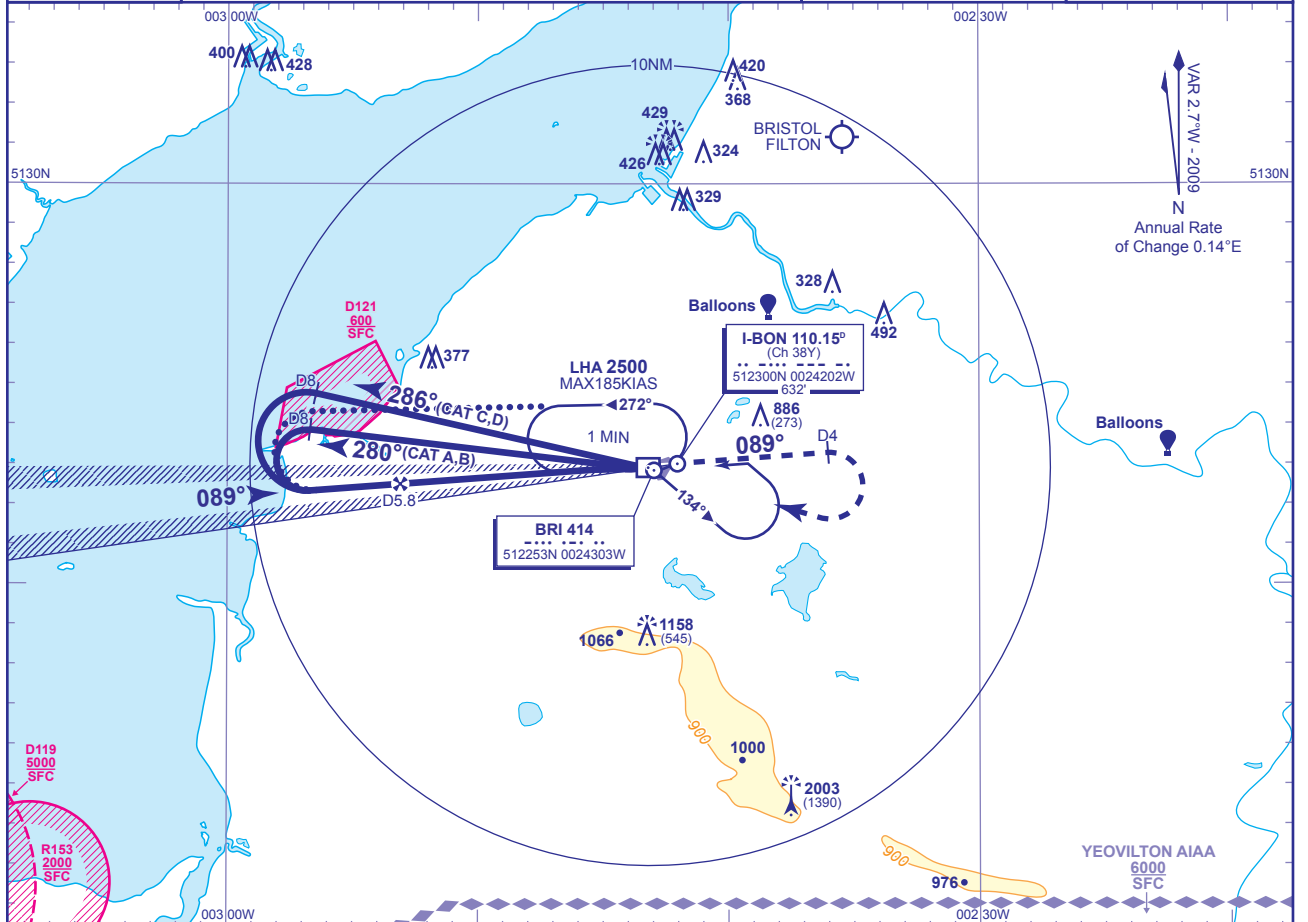


**INSTRUMENT APPROACH CHART - ICAO**

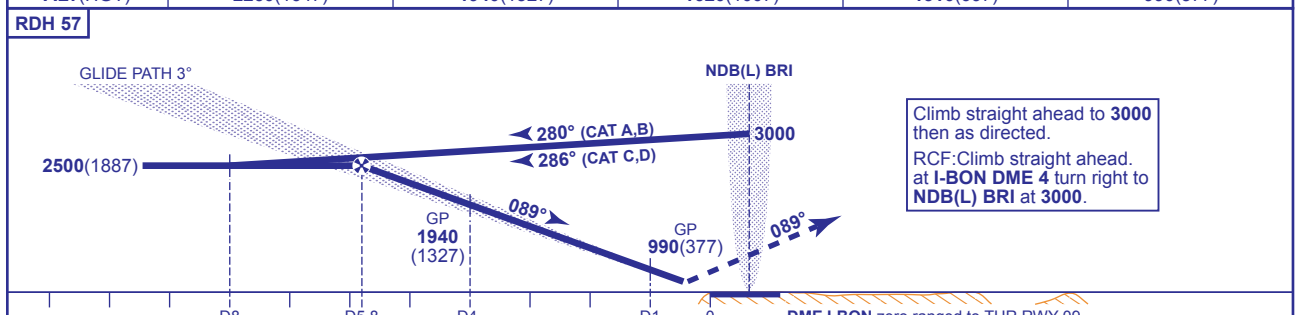
**BRISTOL ILS/DME/NDB(L) RWY 09**  
(ACFT CAT A,B,C,D)

|  |                             |                     |   |                                    |
|--|-----------------------------|---------------------|---|------------------------------------|
|  | TWR 133.850                 | BRISTOL TOWER       | AD ELEVATION 622                                      | TRANSITION ALTITUDE<br><b>6000</b> |
|  | RAD 136.075, 125.650 (LARS) | BRISTOL RADAR       | THR ELEVATION 613                                     |                                    |
|  | ATIS 126.025                | BRISTOL INFORMATION | OBSTACLE ELEVATION<br>2003 AMSL<br>(1390) (ABOVE THR) |                                    |
|  |                             |                     | BEARINGS ARE MAGNETIC                                 |                                    |



**RECOMMENDED PROFILE GLIDE PATH 3°, 320FT/NM**

|           |            |            |            |           |          |
|-----------|------------|------------|------------|-----------|----------|
| DME I-BON | 5          | 4          | 3          | 2         | 1        |
| ALT(HGT)  | 2260(1647) | 1940(1327) | 1620(1007) | 1310(697) | 990(377) |



|                    |                    |           |           |           |           |                 |        |     |     |     |     |     |
|--------------------|--------------------|-----------|-----------|-----------|-----------|-----------------|--------|-----|-----|-----|-----|-----|
| Aircraft Category  |                    | A         | B         | C         | D         | Rate of descent | G/S KT | 160 | 140 | 120 | 100 | 80  |
| OCA (OCH)          | CAT I              | 770(157)  | 780(167)  | 790(177)  | 800(187)  |                 | FT/MIN | 850 | 740 | 640 | 530 | 420 |
| VM(C)OCA (OCH AAL) | Total Area         | 1050(428) | 1260(638) | 1460(838) | 1560(938) |                 |        |     |     |     |     |     |
|                    | North of RWY 09/27 | 1050(428) | 1260(638) | 1360(738) | 1360(738) |                 |        |     |     |     |     |     |

**ALTERNATIVE PROCEDURE EXTENDED HOLDING PATTERN**  
Overhead NDB(L) BRI at 3000 in holding pattern, turn left and descend on the extended outbound leg to 2500. At I-BON DME 8 turn left to intercept LOC inbound. Then continue as for basic procedure.

**AIRCRAFT UNABLE TO RECEIVE DME I-BON**  
Advise ATC. Radar Ranges will be provided at 8NM outbound and at 6NM and 4NM inbound.

- NOTES**
- Lowest altitude to commence procedure from hold is 2500.
  - Maximum KIAS for procedure is 110KIAS (CAT A); 140KIAS (CAT B); 185KIAS (CAT C,D).
  - Below CAT I minima, Glide Path anomalies may be observed.

**CHANGE:** MAG VAR. PROCEDURE. OCA. VM(C)OCA CAT C. OBSTACLES. RECOMMENDED PROFILE. NOTES. ROD. NAV AID COORDINATES.