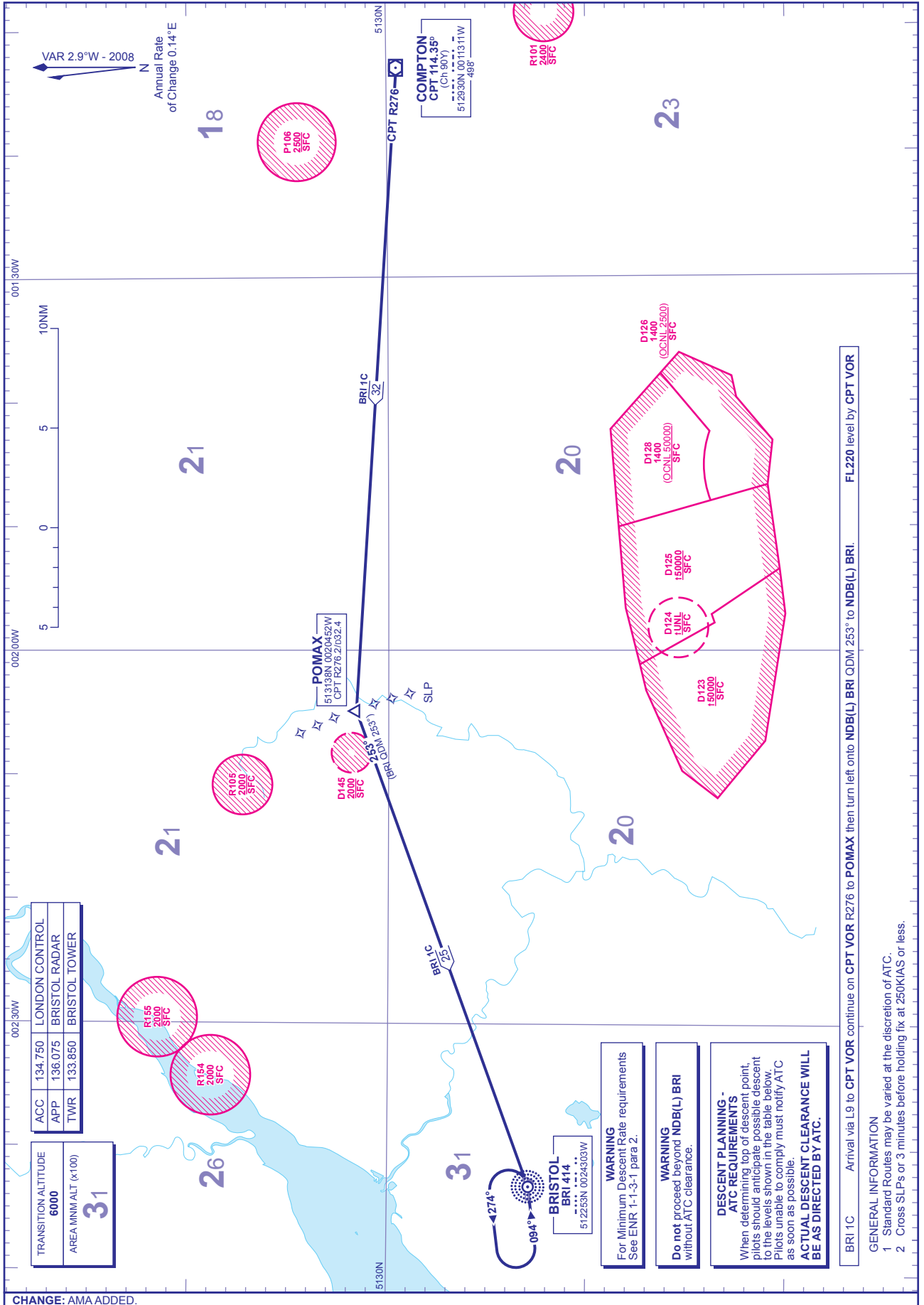


STANDARD ARRIVAL CHART - INSTRUMENT (STAR) - ICAO

DISTANCES IN NAUTICAL MILES
BEARINGS, TRACKS AND RADIALS ARE MAGNETIC
ALTITUDES AND ELEVATIONS ARE IN FEET

**BRISTOL
BRI 1C**



CHANGE: AMA ADDED.

AERO INFO DATE 5 NOV 08

BRILC Arrival via L9 to CPT VOR continue on CPT VOR R276 to POMAX then turn left onto NDB(L) BRI QDM 253° to NDB(L) BRI. FL220 level by CPT VOR

WARNING
For Minimum Descent Rate requirements See ENR 1-1-3-1 para 2.

WARNING
Do not proceed beyond NDB(L) BRI without ATC clearance.

DESCENT PLANNING - ATC REQUIREMENTS
When determining top of descent point pilots should anticipate possible descent to the levels shown in the table below. Pilots unable to comply must notify ATC as soon as possible.
ACTUAL DESCENT CLEARANCE WILL BE AS DIRECTED BY ATC.

- GENERAL INFORMATION**
- Standard Routes may be varied at the discretion of ATC.
 - Cross SLPs or 3 minutes before holding fix at 250KIAS or less.