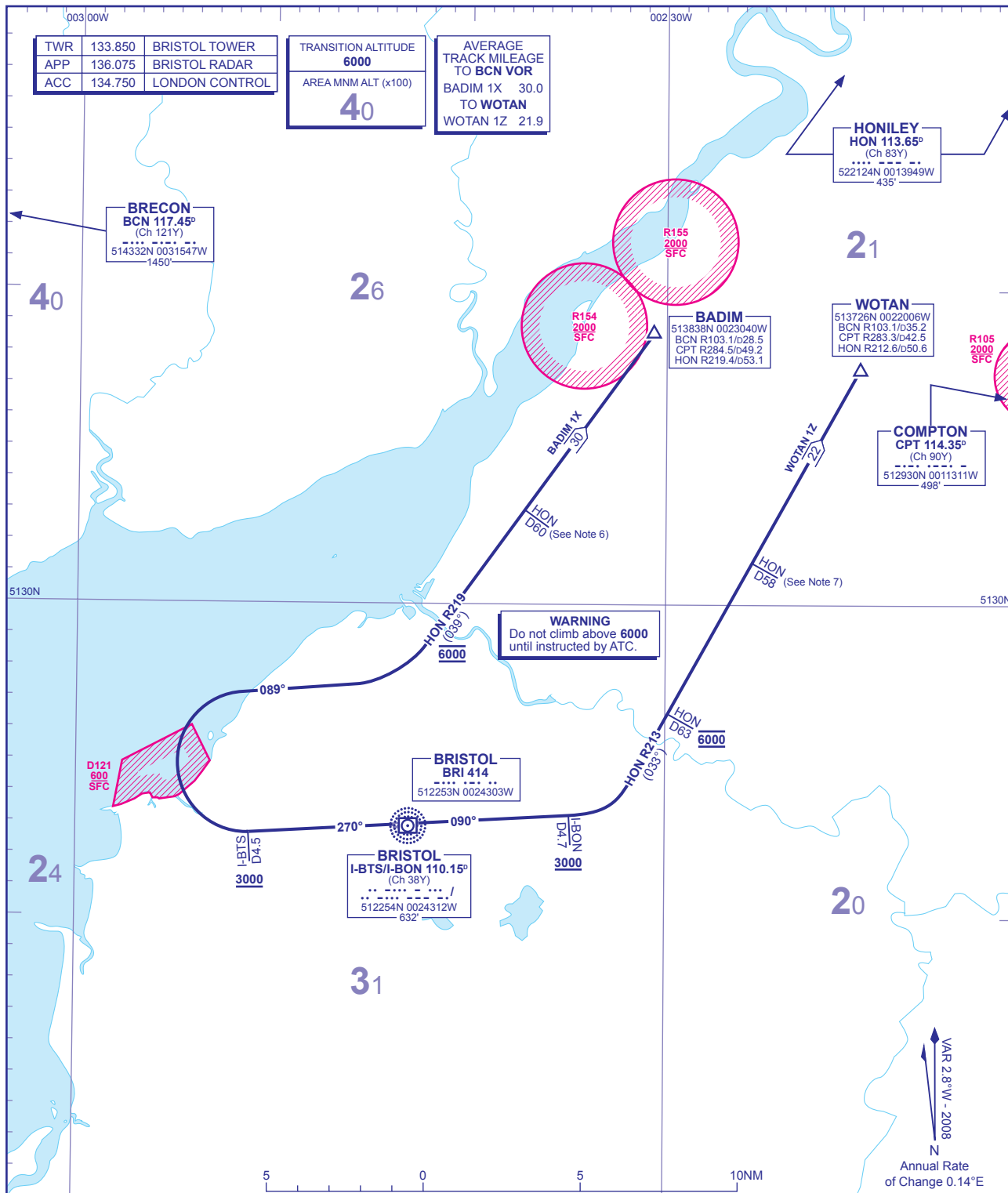


STANDARD DEPARTURE CHART - INSTRUMENT (SID) - ICAO

DISTANCES IN NAUTICAL MILES
BEARINGS, TRACKS AND RADIALS ARE MAGNETIC
ALTITUDES AND ELEVATIONS ARE IN FEET

BRISTOL BADIM 1X WOTAN 1Z



BADIM 1X RWY 27	Climb straight ahead. At I-BTS D4.5, at or above 3000 (8.2%), turn right onto 089°, to intercept HON VOR R219 at 6000 to BADIM (see Note 6).	L9 eastbound.
WOTAN 1Z RWY 09	Climb straight ahead. At I-BON D4.7, at or above 3000 (7.9%), turn left to intercept HON VOR R213 to WOTAN. Cross HON D63 at 6000 (see Note 7).	L9 eastbound.

- GENERAL INFORMATION**
- SIDs reflect Noise Preferential Routings. See EGGD AD 2.21 for Noise Abatement Procedures.
 - Initial climb straight ahead to 1122 QNH (500 QFE).
 - Maximum 250KIAS below FL100 unless otherwise authorised.
 - Cruising levels above FL105 will be allocated en-route by 'London Control'.
 - Climb Performance Planning: Climb gradients greater than 3.3% are required for obstacle clearance purposes, as indicated. In addition climb gradients greater than those necessary for obstacle clearance are required for ATC and airspace requirements as indicated.
 - Pilots of aircraft which are unable to maintain climb gradients to achieve FL80 when crossing HON D60 towards BADIM must inform ATC for alternative clearance.
 - Pilots of aircraft which are unable to maintain climb gradients to achieve FL80 when crossing HON D58 towards WOTAN must inform ATC for alternative clearance.

CHANGE: NEW NOTE 3 ADDED. REPORTING POINT FIXES. MAG VAR.

AERO INFO DATE 10 NOV 08