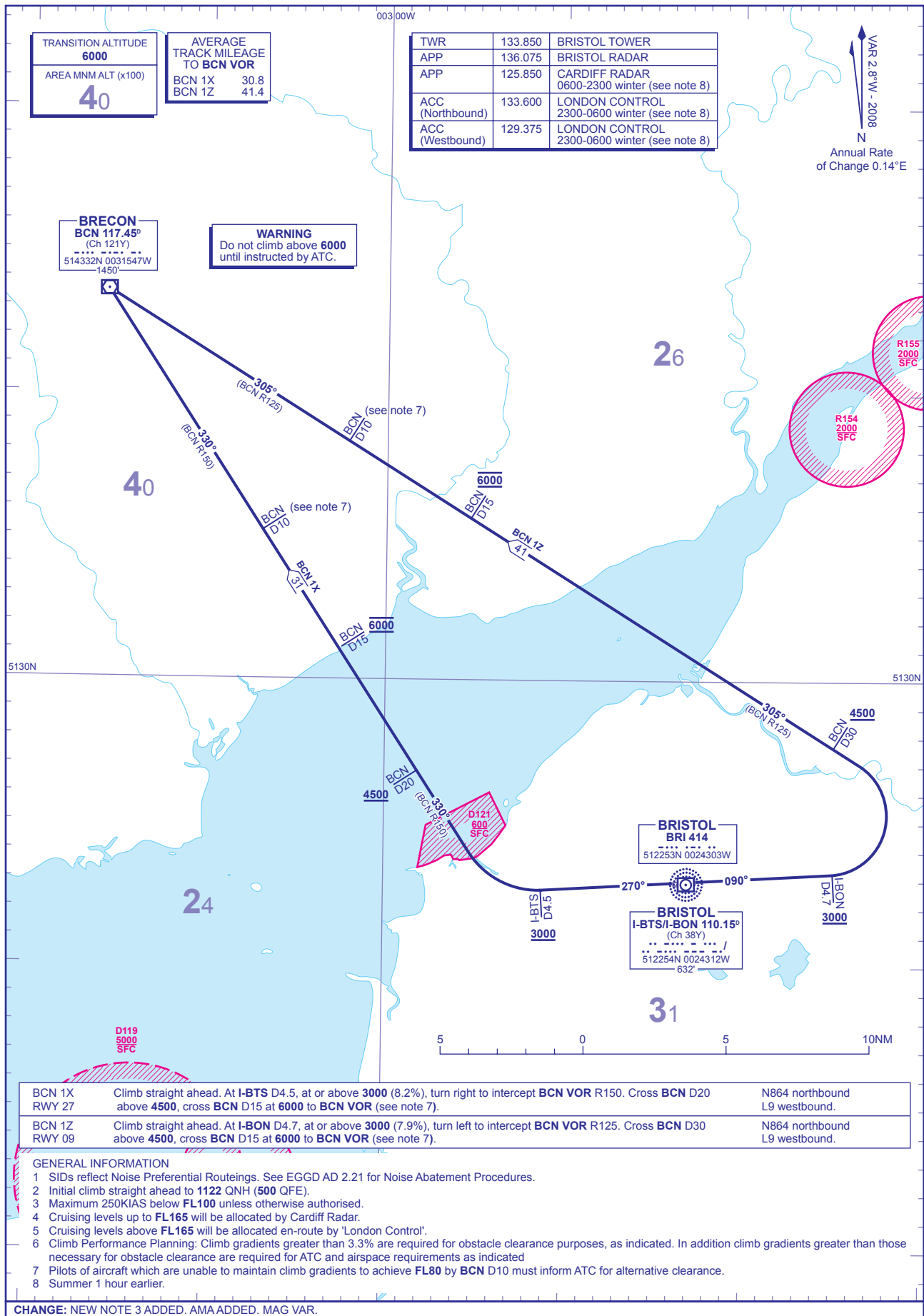


STANDARD DEPARTURE CHART - INSTRUMENT (SID) - ICAO

DISTANCES IN NAUTICAL MILES
BEARINGS, TRACKS AND RADIALS ARE MAGNETIC
ALTITUDES AND ELEVATIONS ARE IN FEET

BRISTOL BCN 1X 1Z



TRANSITION ALTITUDE
6000
AREA MNM ALT (x100)
40

AVERAGE TRACK MILEAGE TO BCN VOR
BCN 1X 30.8
BCN 1Z 41.4

TWR	133.850	BRISTOL TOWER
APP	136.075	BRISTOL RADAR
APP	125.850	CARDIFF RADAR 0600-2300 winter (see note 8)
ACC (Northbound)	133.600	LONDON CONTROL 2300-0600 winter (see note 8)
ACC (Westbound)	129.375	LONDON CONTROL 2300-0600 winter (see note 8)

VAR 2.8°W - 2008
N
Annual Rate of Change 0.14°E

BRECON BCN 117.45°
(Ch 121Y)
514332N 0031547W
1450'

WARNING
Do not climb above **6000** until instructed by ATC.

BRISTOL BRI 414
512253N 0024303W

BRISTOL I-BTS/I-BON 110.15°
(Ch 38Y)
512254N 0024312W
632'

BCN 1X RWY 27	Climb straight ahead. At I-BTS D4.5, at or above 3000 (8.2%), turn right to intercept BCN VOR R150. Cross BCN D20 above 4500 , cross BCN D15 at 6000 to BCN VOR (see note 7).	N864 northbound L9 westbound.
BCN 1Z RWY 09	Climb straight ahead. At I-BON D4.7, at or above 3000 (7.9%), turn left to intercept BCN VOR R125. Cross BCN D30 above 4500 , cross BCN D15 at 6000 to BCN VOR (see note 7).	N864 northbound L9 westbound.

- GENERAL INFORMATION**
- 1 SIDs reflect Noise Preferential Routings. See EGGD AD 2.21 for Noise Abatement Procedures.
 - 2 Initial climb straight ahead to **1122 QNH (500 QFE)**.
 - 3 Maximum 250KIAS below **FL100** unless otherwise authorised.
 - 4 Cruising levels up to **FL165** will be allocated by Cardiff Radar.
 - 5 Cruising levels above **FL165** will be allocated en-route by 'London Control'.
 - 6 Climb Performance Planning: Climb gradients greater than 3.3% are required for obstacle clearance purposes, as indicated. In addition climb gradients greater than those necessary for obstacle clearance are required for ATC and airspace requirements as indicated
 - 7 Pilots of aircraft which are unable to maintain climb gradients to achieve **FL80** by **BCN D10** must inform ATC for alternative clearance.
 - 8 Summer 1 hour earlier.

CHANGE: NEW NOTE 3 ADDED. AMA ADDED. MAG VAR.
AERO INFO DATE 10 NOV 08