

INSTRUMENT APPROACH CHART - ICAO

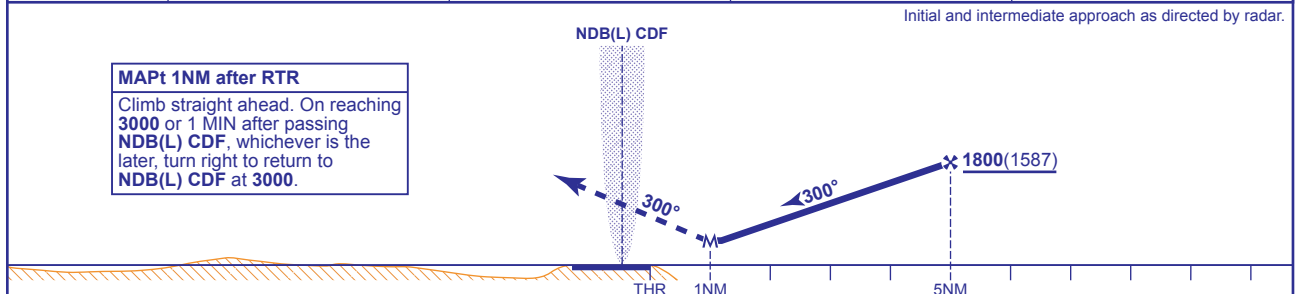
CARDIFF
SRA RTR 2NM
RWY 30
 (ACFT CAT A,B,C,D)

 MSA 25NM NDB(L) CDF	 MSA 10NM NDB(L) CDF	APP 119.150, 125.850	CARDIFF APPROACH	AD ELEVATION	220
		TWR 133.100	CARDIFF TOWER	THR ELEVATION	213
		RAD 125.850	CARDIFF RADAR	OBSTACLE ELEVATION	1294 AMSL (1081) (ABOVE THR)
		119.150 (LARS)			
		ATIS 132.475	CARDIFF INFORMATION	BEARINGS ARE MAGNETIC	TRANSITION ALTITUDE
					6000



RADAR ADVISORY HEIGHTS Gradient 5.2%, 320FT/NM

NM	5.0	4.0	3.0	2.0
ALT(HGT)	1800(1587)	1480(1267)	1170(957)	850(637)



Aircraft Category		A	B	C	D	Rate of descent	G/S KT	160	140	120	100	80
		OCA (OCH)	2.5% MAP	800(587)	800(587)		800(587)	800(587)	FT/MIN	850	740	630
VM(C)OCA (OCH AAL)	Total Area	700(480)	900(680)	1700(1480)	1700(1480)	RTR to MAPt	MIN:SEC	0:22	0:25	0:30	0:36	0:45
	SW of RWY 12/30	700(480)	900(680)	1000(780)	1000(780)							

NOTE 1 ATC will authorise crossing of EG D119 before start of procedure.
NOTE 2 Radar Ranges measured to touchdown.

CHANGE: OBSTACLES. MAG VAR. COM.

AERO INFO DATE 09 NOV 09