
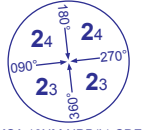
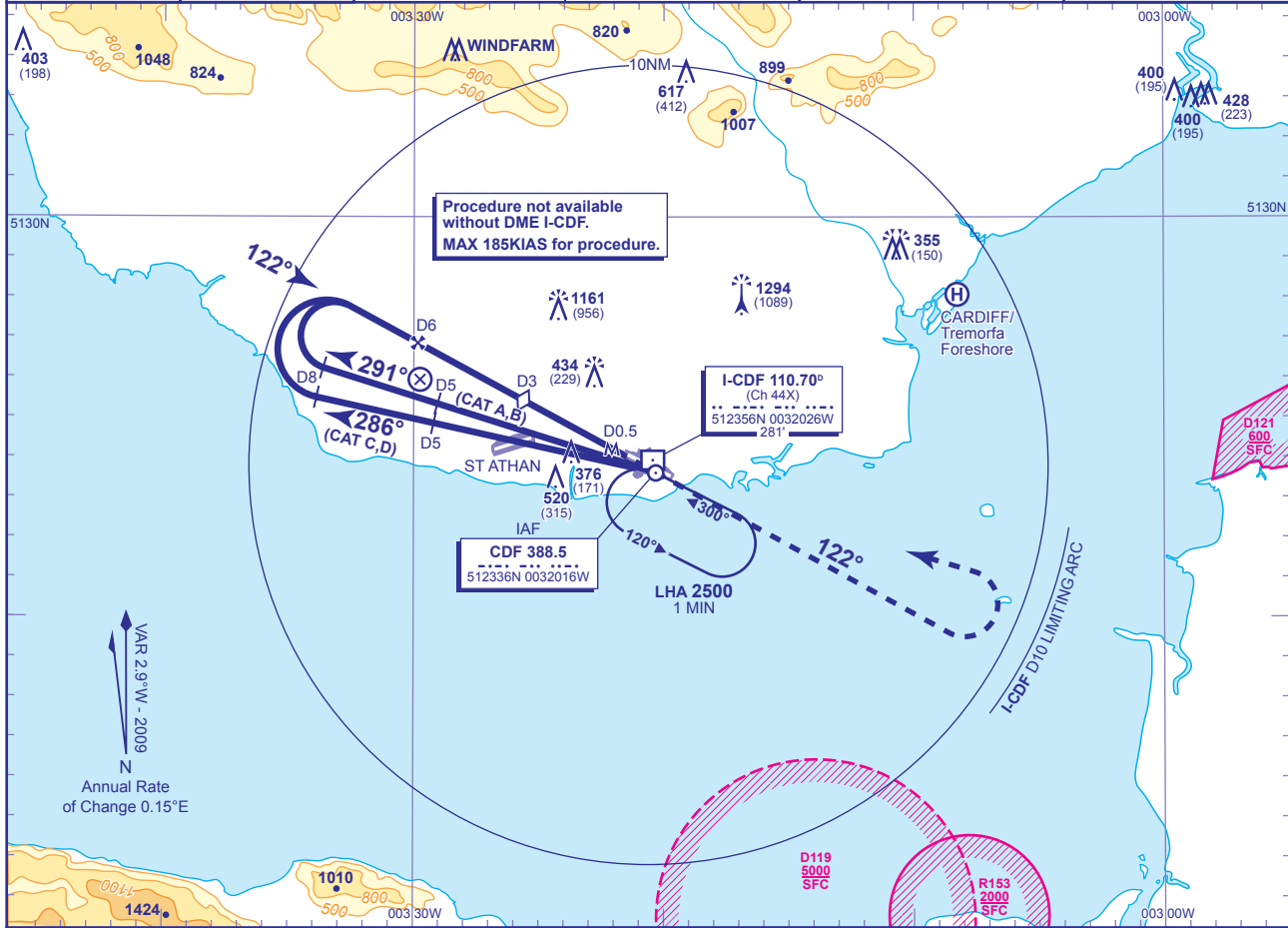


INSTRUMENT APPROACH CHART - ICAO

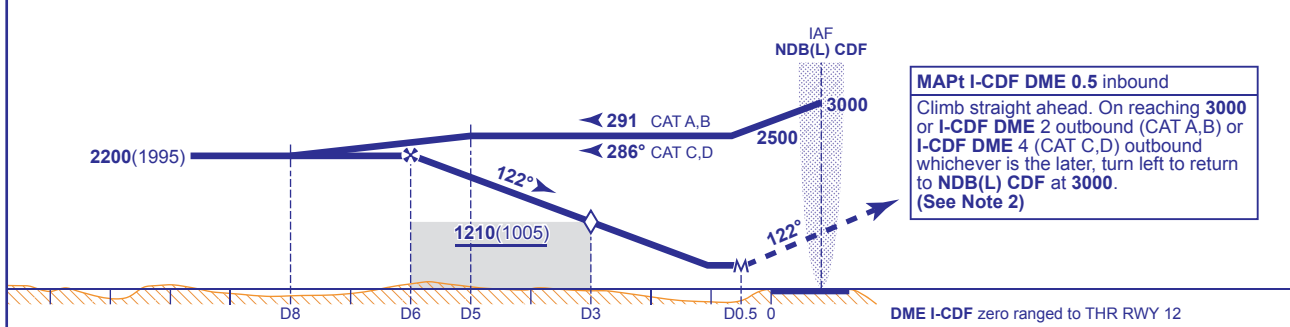
**CARDIFF
NDB(L)/DME
RWY 12**
(ACFT CAT A,B,C,D)

		APP 119.150, 125.850	CARDIFF APPROACH	AD ELEVATION	220
		TWR 133.100	CARDIFF TOWER	THR ELEVATION	205
		RAD 125.850	CARDIFF RADAR	OBSTACLE ELEVATION	1294 AMSL (1089) (ABOVE THR)
		119.150 (LARS)		BEARINGS ARE MAGNETIC	
		ATIS 132.475	CARDIFF INFORMATION	TRANSITION ALTITUDE	6000



RECOMMENDED PROFILE Gradient 5.2%, 320FT/NM

DME I-CDF	5	4	3 (SDF)	2
ALT(HGT)	1850(1645)	1530(1325)	1210(1005)	890(685)



Aircraft Category	A	B	C	D	Rate of descent	G/S KT				
						160	140	120	100	80
OCA (OCH)	Procedure	630(425)	630(425)	630(425)	630(425)	850	740	640	530	430
VM(C)OCA (OCH AAL)	Total Area	700(480)	900(680)	1700(1480)	1700(1480)					
	SW of RWY 12/30	700(480)	900(680)	1000(780)	1000(780)					

- NOTE 1** FAT offset 2° and nominally intercepts RWY C/L 1.2NM before THR.
NOTE 2 Subject to ATC approval, aircraft inbound to NDB(L) CDF and receiving DME I-CDF may descend to 3000 after passing I-CDF DME 10.
NOTE 3 Aircraft to remain within I-CDF DME 10 during the missed approach turn in order to be contained within Cardiff controlled airspace. If unable to comply, notify ATC.

CHANGE: OBSTACLES. MAG VAR. CAT A, B OUTBOUND. COM.

AERO INFO DATE 09 NOV 09