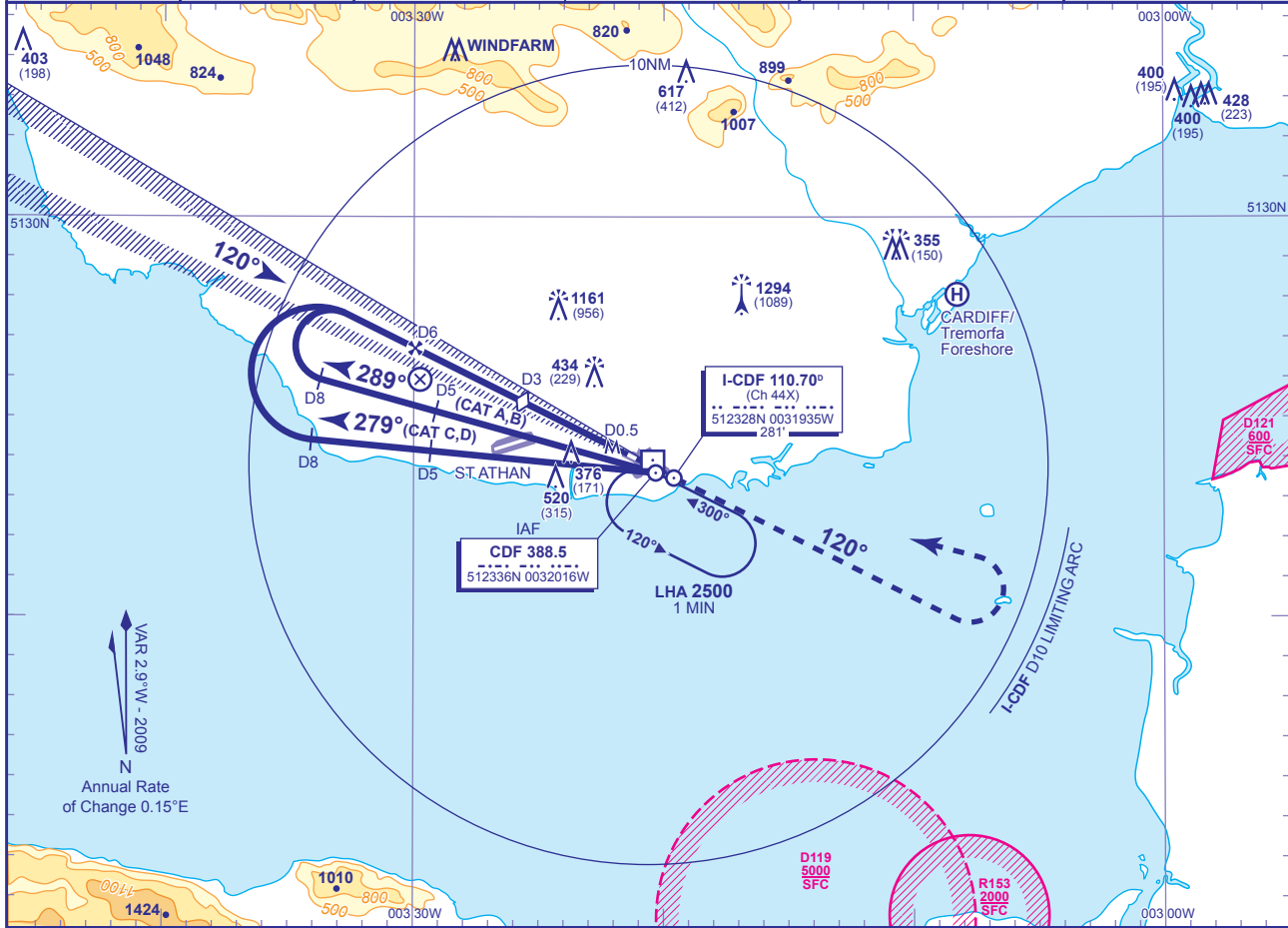


INSTRUMENT APPROACH CHART - ICAO

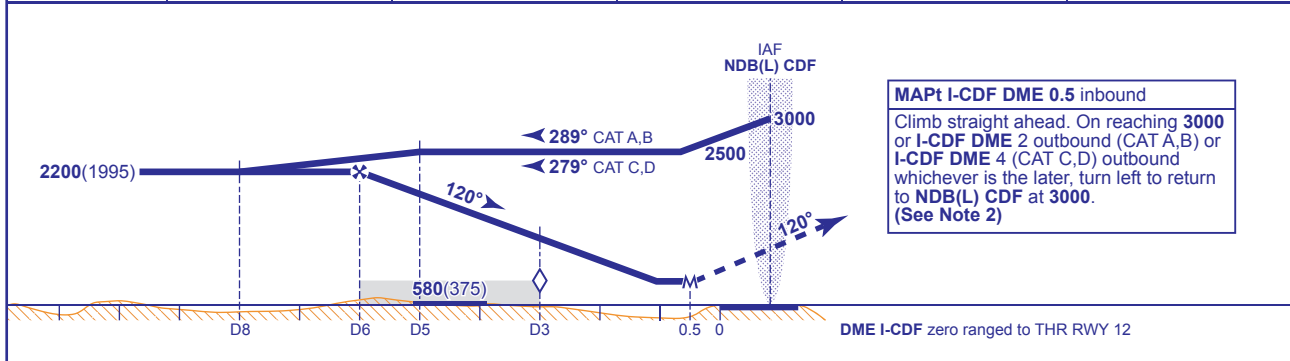
CARDIFF
LOC/DME/NDB(L)
RWY 12
 (ACFT CAT A,B,C,D)

 MSA 25NM NDB(L) CDF	 MSA 10NM NDB(L) CDF	APP 119.150, 125.850	CARDIFF APPROACH	AD ELEVATION	220
		TWR 133.100	CARDIFF TOWER	THR ELEVATION	205
		RAD 125.850	CARDIFF RADAR	OBSTACLE ELEVATION	1294 AMSL (1089) (ABOVE THR)
		119.150 (LARS)		BEARINGS ARE MAGNETIC	
		ATIS 132.475	CARDIFF INFORMATION	TRANSITION ALTITUDE	6000



RECOMMENDED PROFILE Gradient 5.2%, 320FT/NM

DME I-CDF	5	4	3 (SDF)	2	1
ALT(HGT)	1880(1675)	1550(1345)	1230(1025)	900(695)	580(375)



Aircraft Category	A	B	C	D	Rate of descent	G/S KT					
OCA (OCH)	Procedure	550(345)	550(345)	550(345)		550(345)	FT/MIN	160	140	120	100
VM(C)OCA (OCH AAL)	Total Area	700(480)	900(680)	1700(1480)	1700(1480)		850	740	640	530	430
	SW of RWY 12/30	700(480)	900(680)	1000(780)	1000(780)						

AIRCRAFT UNABLE TO RECEIVE DME I-CDF
 Advise ATC. Radar ranges will be provided at 5NM and 8NM outbound and at 6NM and 3NM inbound.

NOTE 1 Subject to ATC approval, aircraft inbound to NDB(L) CDF and receiving DME I-CDF may descend to 3000 after passing I-CDF DME 10.
NOTE 2 Aircraft to remain within I-CDF DME 10 during the missed approach turn in order to be contained within Cardiff controlled airspace. If unable to comply, notify ATC.

CHANGE: OBSTACLES. MAG VAR. CAT A, B OUTBOUND. COM.

AERO INFO DATE 09 NOV 09