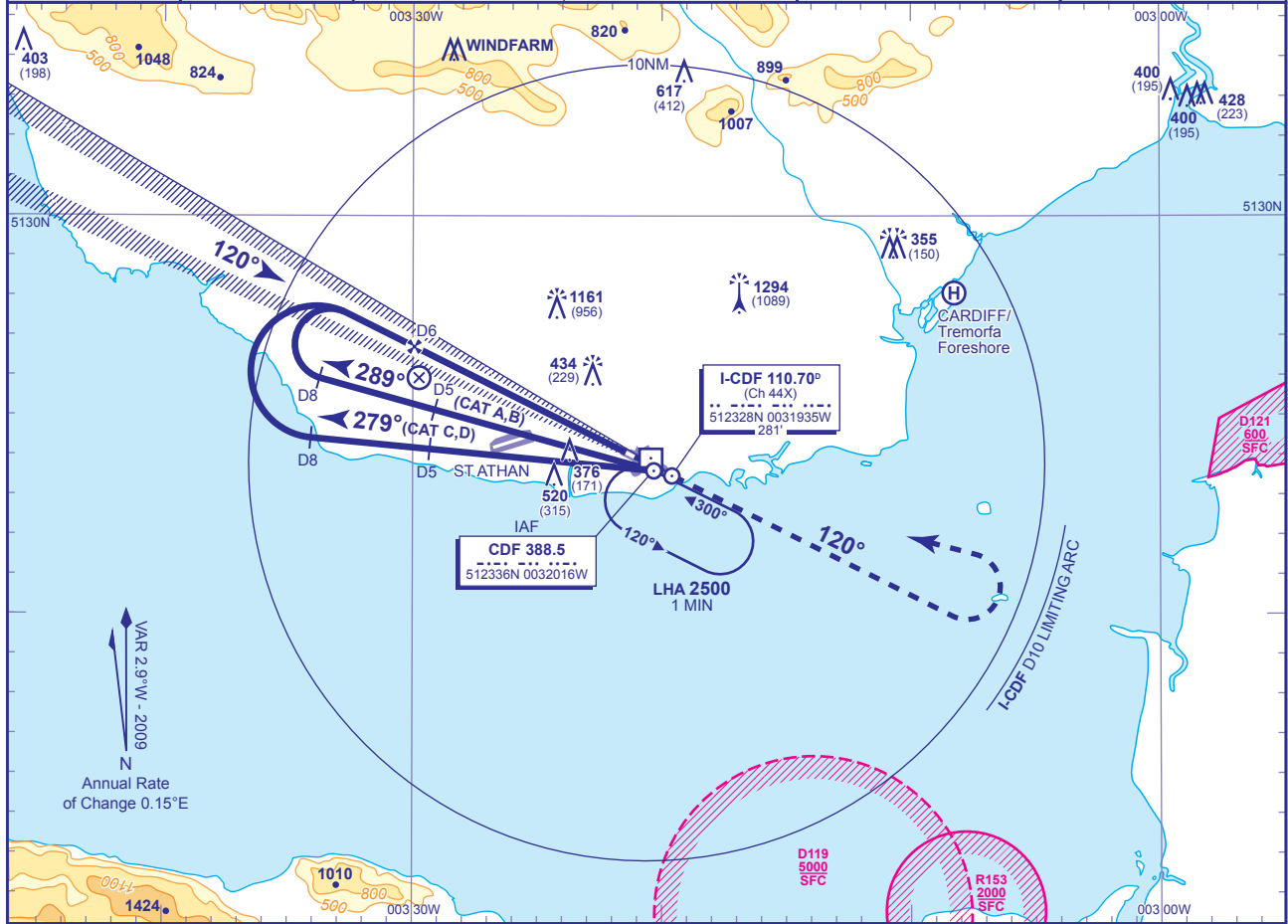


INSTRUMENT APPROACH CHART - ICAO

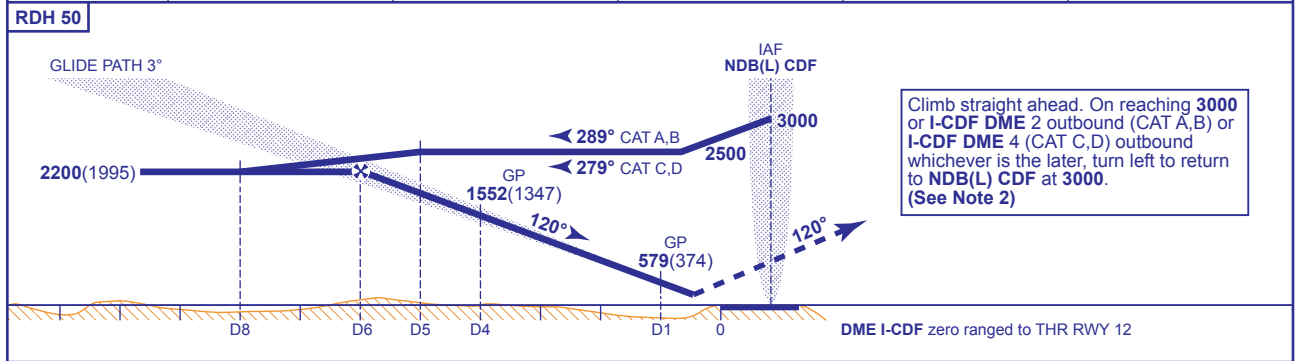
CARDIFF ILS/DME/NDB(L) RWY 12
(ACFT CAT A,B,C,D)

<p>MSA 25NM NDB(L) CDF</p>	<p>MSA 10NM NDB(L) CDF</p>	APP 119.150, 125.850	CARDIFF APPROACH	AD ELEVATION	220
		TWR 133.100	CARDIFF TOWER	THR ELEVATION	205
		RAD 125.850	CARDIFF RADAR	OBSTACLE ELEVATION	1294 AMSL (1089) (ABOVE THR)
		119.150 (LARS)			
		ATIS 132.475	CARDIFF INFORMATION	BEARINGS ARE MAGNETIC	TRANSITION ALTITUDE
					6000



RECOMMENDED PROFILE GLIDE PATH 3°, 320FT/NM

DME I-CDF	5	4	3	2	1
ALT(HGT)	1876(1671)	1552(1347)	1228(1023)	903(698)	579(374)



Aircraft Category		A	B	C	D	Rate of descent FT/MIN	G/S KT	160	140	120	100	80
OCA (OCH)	CAT I	346(141)	357(152)	368(163)	382(177)			860	750	640	540	430
VM(C)OCA (OCH AAL)	Total Area	700(480)	900(680)	1700(1480)	1700(1480)							
	SW of RWY 12/30	700(480)	900(680)	1000(780)	1000(780)							

AIRCRAFT UNABLE TO RECEIVE DME I-CDF
Advise ATC. Radar ranges will be provided at 5NM and 8NM outbound and at 6NM and 4NM inbound.

NOTE 1 Subject to ATC approval, aircraft inbound to NDB(L) CDF and receiving DME I-CDF may descend to 3000 after passing I-CDF DME 10.
NOTE 2 Aircraft to remain within I-CDF DME 10 during the missed approach turn in order to be contained within Cardiff controlled airspace. If unable to comply, notify ATC.

CHANGE: OBSTACLES. MAG VAR. CAT A, B OUTBOUND. COM.

AERO INFO DATE 09 NOV 09