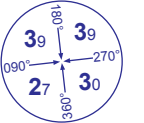
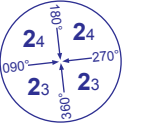
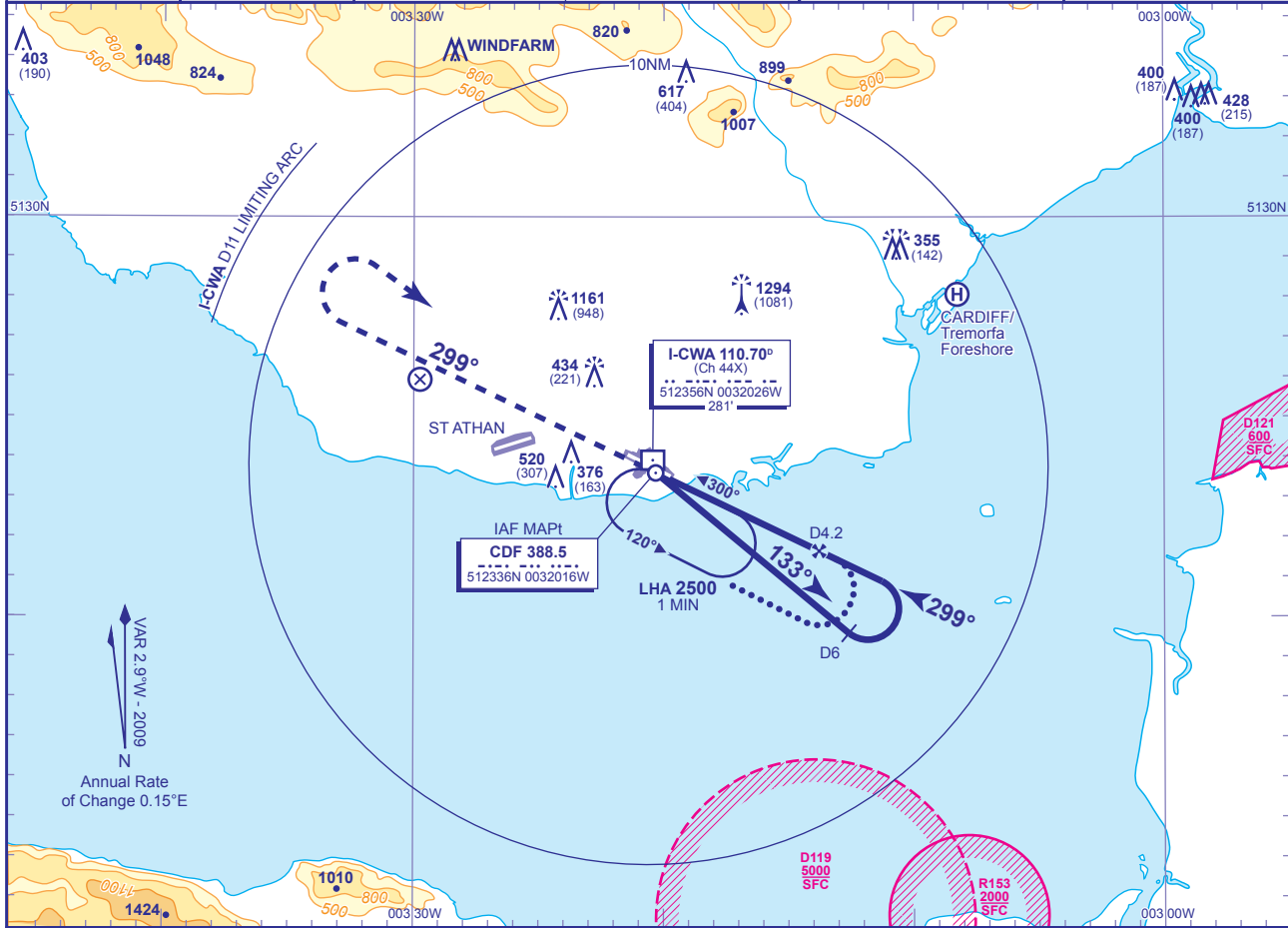


**INSTRUMENT APPROACH CHART - ICAO**

**CARDIFF  
NDB(L)/DME  
RWY 30  
(ACFT CAT A,B)**

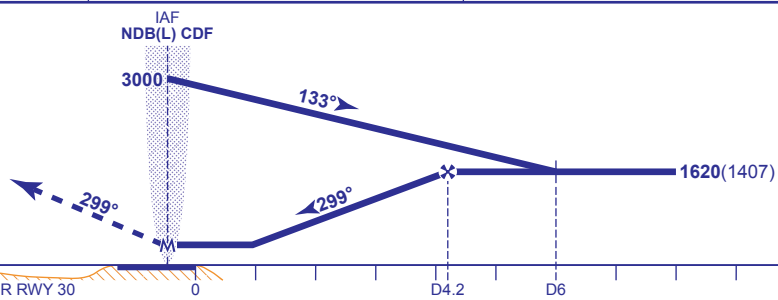
 MSA 25NM NDB(L) CDF	 MSA 10NM NDB(L) CDF	APP 119.150, 125.850	CARDIFF APPROACH	AD ELEVATION 220
		TWR 133.100	CARDIFF TOWER	THR ELEVATION 213
		RAD 125.850	CARDIFF RADAR	OBSTACLE ELEVATION 1294 AMSL (1081) (ABOVE THR)
		119.150 (LARS)		
		ATIS 132.475	CARDIFF INFORMATION	BEARINGS ARE MAGNETIC
				TRANSITION ALTITUDE 6000



**RECOMMENDED PROFILE** Gradient 5.3%, 320FT/NM

<b>DME I-CWA</b>	3	2	1
<b>ALT(HGT)</b>	1230(1017)	910(697)	580(367)

**MAPt NDB(L) CDF**  
Climb straight ahead. On reaching 3000 or I-CWA DME 2 outbound whichever is the later, turn right to return to NDB(L) CDF at 3000. (See Note 5)



Aircraft Category	A	B	Rate of descent	G/S KT	160	140	120	100	80
				FT/MIN	860	750	640	540	430
<b>OCA (OCH)</b>	<b>WITH DME</b>	580(367)	580(367)						
	<b>NO DME</b>	630(417)	630(417)						
<b>VM(C)OCA (OCH AAL)</b>	<b>Total Area</b>	700(480)	900(680)						

**ALTERNATIVE PROCEDURE EXTENDED HOLDING PATTERN**

Extend outbound leg of the NDB(L) CDF holding pattern to I-CWA DME 5 descending to 1620(1407) then proceed as for main procedure.

**AIRCRAFT UNABLE TO RECEIVE DME I-CWA**

As for main and alternative procedures except fly outbound leg for 2.5 MIN and when established descend to MDH. Radar ranges will be passed at 6NM outbound and 4NM inbound.

**NOTE 1** FAT offset 1° from RWY C/L.

**2** Subject to ATC approval, aircraft inbound to NDB(L) CDF and receiving DME I-CWA may descend to 3000 after passing I-CWA DME 10.

**3** ATC will authorise crossing of EG D119 before start of procedure.

**4** Timed procedure not available without radar monitoring.

**5** Aircraft to remain within I-CWA DME 11 during the missed approach turn in order to be contained within Cardiff controlled airspace. If unable to comply, notify ATC.

**CHANGE:** OBSTACLES. MAG VAR. COM.

AERO INFO DATE 09 NOV 09