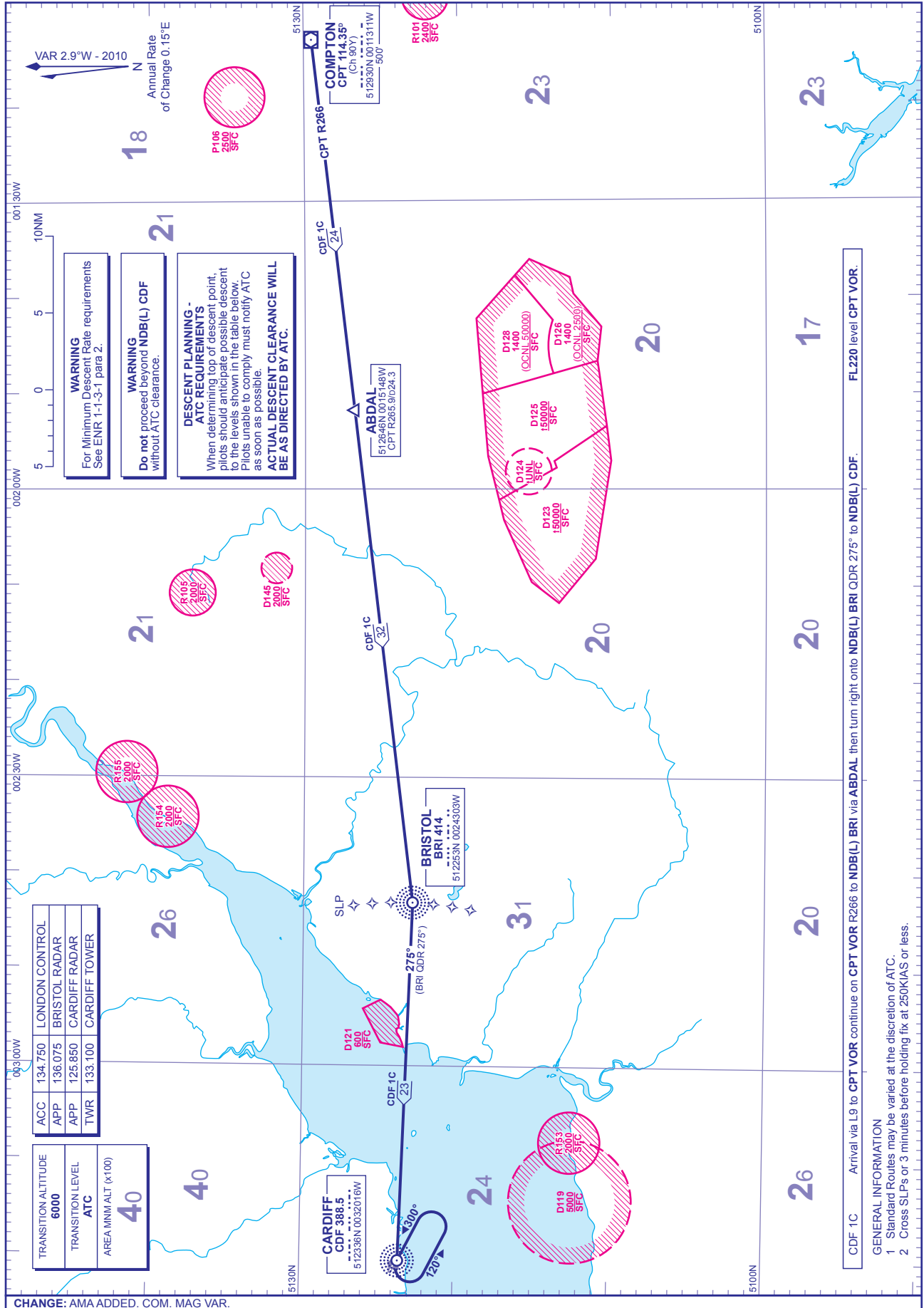


STANDARD ARRIVAL CHART - INSTRUMENT (STAR) - ICAO

DISTANCES IN NAUTICAL MILES
BEARINGS, TRACKS AND RADIALS ARE MAGNETIC
ALTITUDES AND ELEVATIONS ARE IN FEET

CARDIFF CDF 1C



ACC	134.750	LONDON CONTROL
APP	136.075	BRISTOL RADAR
APP	125.850	CARDIFF RADAR
TWR	133.100	CARDIFF TOWER

TRANSITION ALTITUDE	6000
TRANSITION LEVEL	ATC
AREA MNM ALT (x100)	40

CDF 1C Arrival via L9 to CPT VOR continue on CPT VOR R266 to NDB(L) BRI via ABDAL then turn right onto NDB(L) BRI QDR 275° to NDB(L) CDF. FL220 level CPT VOR.

- GENERAL INFORMATION
- Standard Routes may be varied at the discretion of ATC.
 - Cross SLPs or 3 minutes before holding fix at 250KIAS or less.

CHANGE: AMA ADDED. COM. MAG VAR.
AERO INFO DATE 9 NOV 09