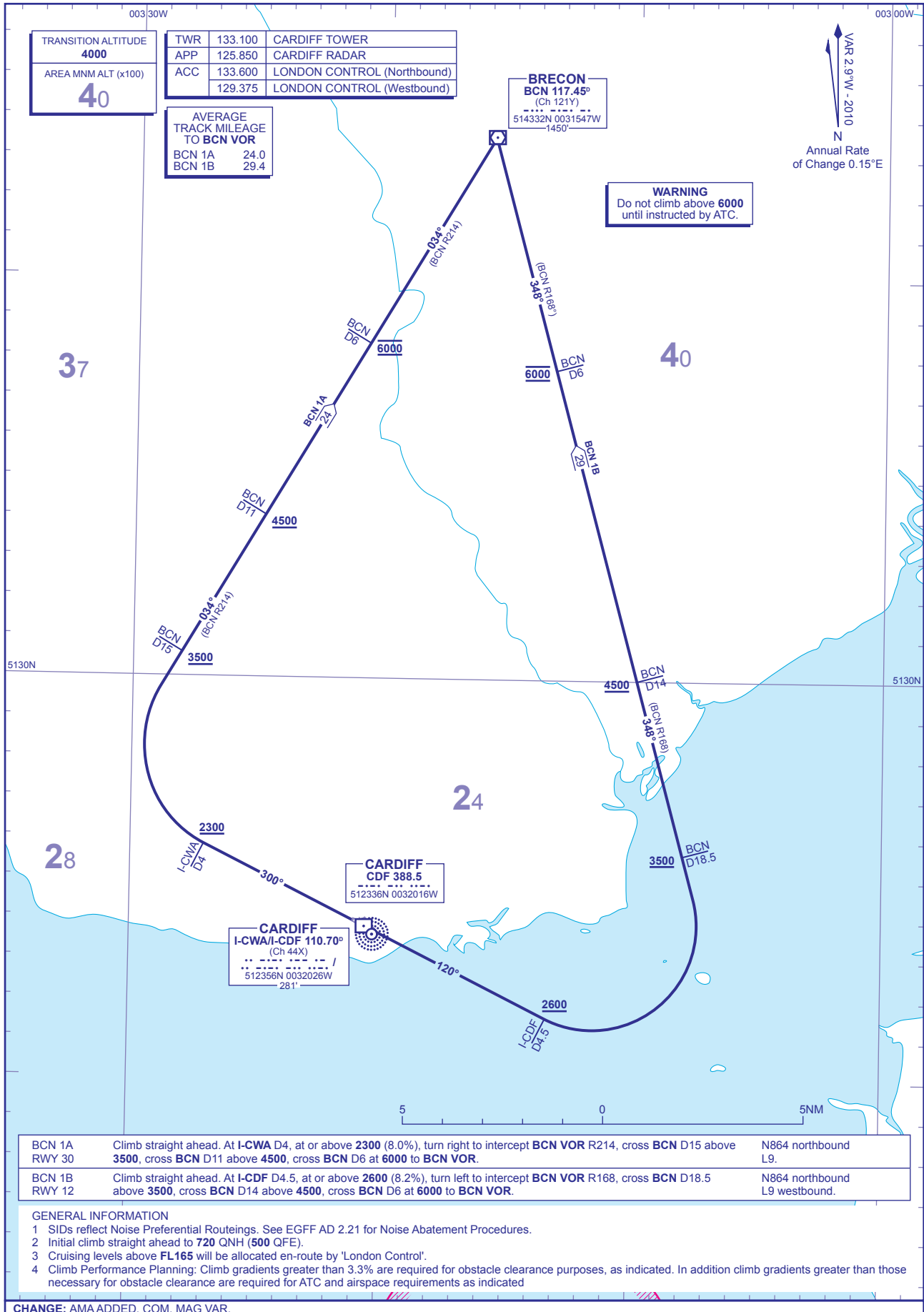


STANDARD DEPARTURE CHART - INSTRUMENT (SID) - ICAO

DISTANCES IN NAUTICAL MILES
BEARINGS, TRACKS AND RADIALS ARE MAGNETIC
ALTITUDES AND ELEVATIONS ARE IN FEET

CARDIFF BCN 1A 1B



TRANSITION ALTITUDE	4000
AREA MNM ALT (x100)	40

TWR	133.100	CARDIFF TOWER
APP	125.850	CARDIFF RADAR
ACC	133.600	LONDON CONTROL (Northbound)
	129.375	LONDON CONTROL (Westbound)

AVERAGE TRACK MILEAGE TO BCN VOR	
BCN 1A	24.0
BCN 1B	29.4

WARNING
Do not climb above 6000 until instructed by ATC.

VAR 2.9°W - 2010
N
Annual Rate of Change 0.15°E

BCN 1A RWY 30	Climb straight ahead. At I-CWA D4, at or above 2300 (8.0%), turn right to intercept BCN VOR R214, cross BCN D15 above 3500, cross BCN D11 above 4500, cross BCN D6 at 6000 to BCN VOR.	N864 northbound L9.
BCN 1B RWY 12	Climb straight ahead. At I-CDF D4.5, at or above 2600 (8.2%), turn left to intercept BCN VOR R168, cross BCN D18.5 above 3500, cross BCN D14 above 4500, cross BCN D6 at 6000 to BCN VOR.	N864 northbound L9 westbound.

GENERAL INFORMATION

- SIDs reflect Noise Preferential Routings. See EGFF AD 2.21 for Noise Abatement Procedures.
- Initial climb straight ahead to 720 QNH (500 QFE).
- Cruising levels above FL165 will be allocated en-route by 'London Control'.
- Climb Performance Planning: Climb gradients greater than 3.3% are required for obstacle clearance purposes, as indicated. In addition climb gradients greater than those necessary for obstacle clearance are required for ATC and airspace requirements as indicated

CHANGE: AMA ADDED. COM. MAG VAR.

AERO INFO DATE 9 NOV 09