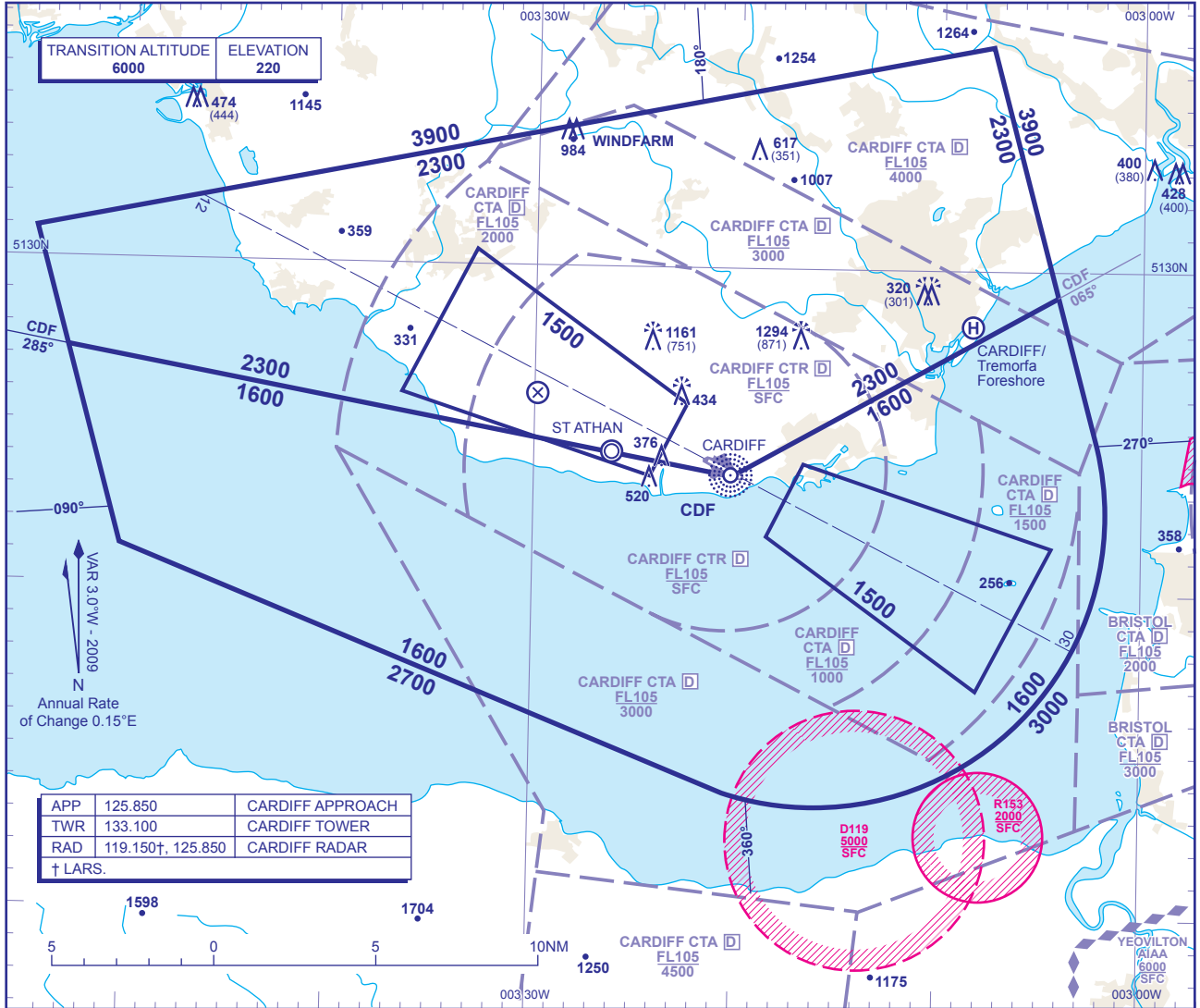


ATC SURVEILLANCE MINIMUM ALTITUDE CHART - ICAO

BEARINGS, TRACKS AND RADIALS ARE MAGNETIC
ELEVATIONS IN FEET AMSL 1287
HEIGHTS IN FEET AGL (870)

CARDIFF



MINIMUM INITIAL ALTITUDE

Within the ATC Surveillance Minimum Altitude area the minimum initial altitude to be allocated by the approach surveillance controller is:
 a) **2300** in the sector defined by the lateral limits; 513055N 0035445W - 513655N 0030733W - 512913N 0030413W - 512335N 0032012W - 512715N 0035305W - 513055N 0035445W.
 b) **1600** in the sector defined by the lateral limits; 512715N 0035305W - 512335N 0032012W - 512913N 0030413W - 512435N 0030213W thence clockwise by an arc of a circle radius 9NM centred on 512224N 0031610W to 511348N 0032026W - 512111N 0035021W - 512715N 0035305W.

Further descent to **1500** may be given within the Approach Areas shown when on 40° leg or Final Approach.
 NOTE: Radar headings will be allocated so as to avoid Danger Area D119 when active.

OUTSIDE THE DESIGNATED ATC SURVEILLANCE MINIMUM ALTITUDE AREA

The minimum altitude to be allocated by the approach surveillance controller will be either the Minimum Sector Altitude, or **1000** above any fixed obstacles:
 a) within 5NM of the aircraft*, or
 b) within the sector 15NM ahead of and within 20° either side of the aircraft's track*.
 *When the aircraft is within 15NM of the radar antennae, the 5NM in a) and the 15NM in b) may be reduced to 3NM and 10NM respectively.

LOSS OF COMMUNICATION PROCEDURES

Initial Approach

Continue visually or by means of an appropriate approved final approach aid. If not possible proceed at **2500**, or last assigned level if higher to **NDB(L) CDF†**.

Intermediate and Final Approach

Continue visually or by means of an appropriate final approach aid. If not possible follow the Missed Approach Procedure to **NDB(L) CDF†**.
 † In all cases where the aircraft returns to the holding facility the procedure to be adopted is the Basic Radio Failure Procedure detailed at ENR 1.1.3.

GENERAL INFORMATION

- Levels shown are based on QNH.
- Only significant obstacles and dominant spot heights are shown.
- The minimum levels shown within the ATC Surveillance Minimum Altitude area ensure terrain clearance in conformity with Rule 33 of the Rules of the Air Regulations 2007 in respect of obstacles within the ATCSMA area.
- Minimum Sector Altitudes are based on obstacles and spot heights within 25NM of the Aerodrome Reference Point.
- Controlled airspace with a base in excess of **5000** or FL55, as appropriate, is not shown.
- Class D airway N864 FL55-FL105, transits the Cardiff CTA/CTR, but is not shown for purposes of clarity. See ENR 3.1 for details.
- This chart should only be used for the cross-checking of assigned altitudes whilst in receipt of an ATC Surveillance service.**

CHANGE: OBSTACLES.COM.

AERO INFO DATE 9 NOV 09

INTENTIONALLY BLANK