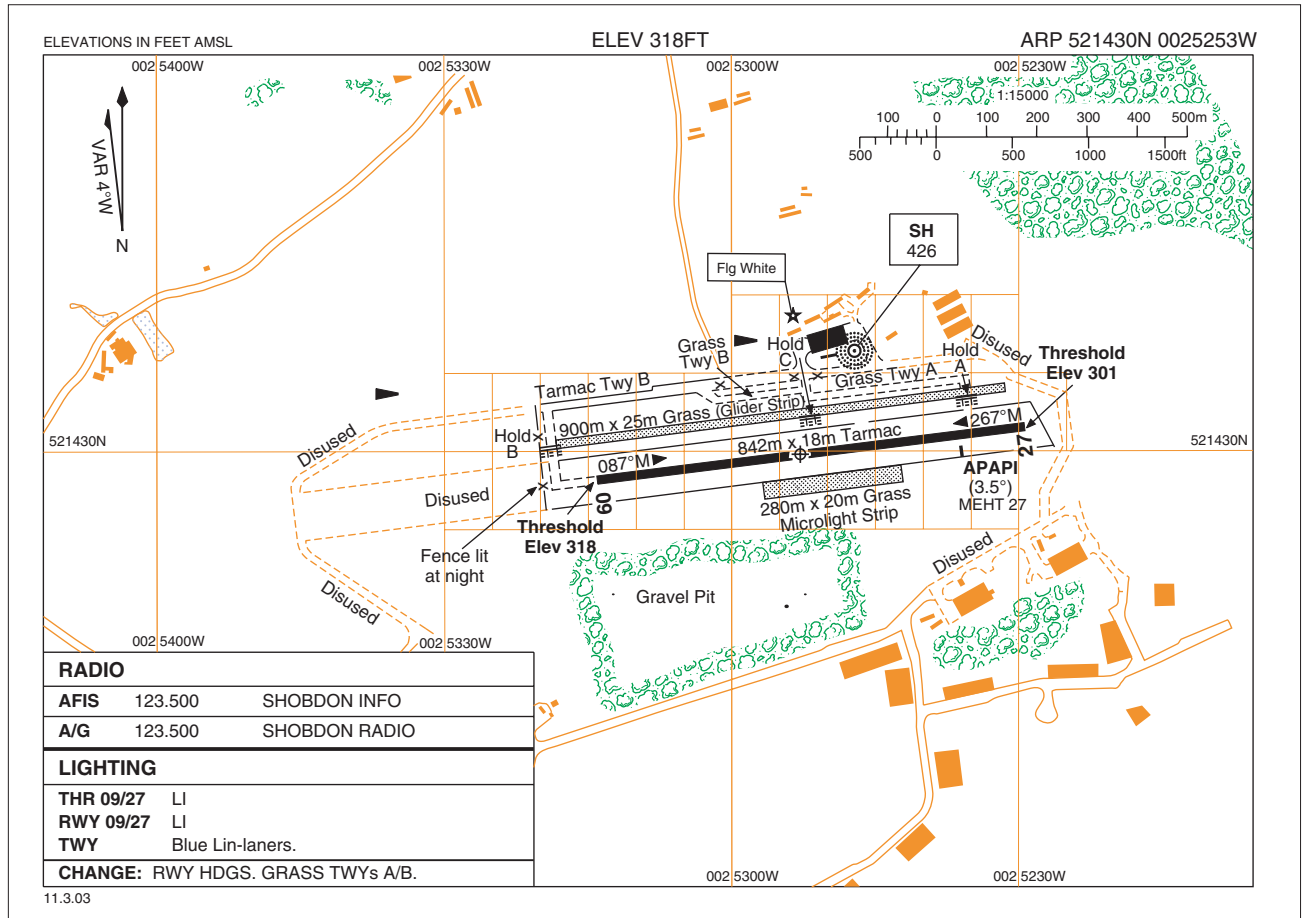


EGBS AD 2.1 **EGBS** **SHOBDON**



EGBS AD 2.2 – AERODROME GEOGRAPHICAL AND ADMINISTRATIVE DATA

2	Direction and distance from city:	6 nm W of Leominster.
6	AD Administration:	Herefordshire Aero Club Ltd.
	Address:	Shobdon Aerodrome, Leominster, Hereford, HR6 9NR.
	Telephone:	01568-708369.
	Fax:	01568-708935.

EGBS AD 2.3 – OPERATIONAL HOURS

1	AD:	Winter: Fri-Wed 0900-1630; Thu 0900-2100 Summer: Apr 0800-1700; May-Aug 0800-1830; Sep-Oct 0800-1700.
2	Customs and Immigration:	By arrangement.
7	ATS:	As AD hours. See also AD 2.18.
8	Fuelling:	As AD hours.
12	Remarks:	This aerodrome is PPR . See also AD 2.20.

EGBS AD 2.4 – HANDLING SERVICES AND FACILITIES

2	Fuel/oil types:	Fuel: AVTUR JET A-1, AVGAS 100LL. Oil: AD80, AD100, ST100.
----------	------------------------	--

EGBS AD 2.6 – RESCUE AND FIRE FIGHTING SERVICES

1	AD Category for fire fighting:	RFF Category 1.
----------	---------------------------------------	-----------------

EGBS AD 2.10 – AERODROME OBSTACLES					
In Approach/Take-off areas			In circling area and at aerodrome		
1			2		
Runway/Area affected	Obstacle type Elevation Markings/lighting	Co-ordinates	Obstacle type Elevation Markings/lighting	Co-ordinates	
a	b	c	a	b	
		ft amsl		ft amsl	
09/Approach 27/Take-off	Tree Fence	409 321 († 2221RCL) († 939RCL)	Wapley Hill Shobdon Hill Hill	1080 1060 1096	*521524.00N 0025740.00W *521618.00N 0025423.00W *521418.00N 0030104.00W
27/Approach 09/Take-off	Tree	316 († 905RCL)			
3 Remarks:		† Distance (m) beyond start of TORA			

EGBS AD 2.12 – RUNWAY PHYSICAL CHARACTERISTICS					
Designations RWY Number	True bearing	Dimensions of RWY (m)	Strength (PCN) and surface of RWY and stopway	THR co-ordinates RWY end co-ordinates THR Geoid undulation	THR elevation Highest elevation of TDZ of precision APP RWY
1	2	3	4	5	6
09	082.90°	842 x 18	Tarmac	*521428.24N 0025314.18W — GUND	318 ft
27	262.90°	842 x 18	Tarmac	*521431.54N 0025230.91W — GUND	301 ft
Slope of RWY/SWY	Stopway Dimensions (m)	Clearway Dimensions (m)	Strip Dimensions (m)	OFZ	
7	8	9	10	11	
12 Remarks:					

EGBS AD 2.13 – DECLARED DISTANCES					
Runway Designator	TORA (m)	TODA (m)	ASDA (m)	LDA (m)	Remarks
1	2	3	4	5	6
09	842	842	842	842	
27	842	842	842	842	

EGBS AD 2.17 – ATS AIRSPACE			
Designation and lateral limits		Vertical limits	Airspace Classification
1		2	3
Shobdon Aerodrome Traffic Zone (ATZ) Circle radius 2 nm centred on longest notified runway (09/27) 521430N 0025253W.		2000 ft aal SFC	G †
4	ATS unit callsign: Language:	Shobdon Radio/Information. English.	
5	Transition Altitude:		
6	Remarks:	† Refer to Section ENR 1.4 for Notifications. See AD 2.3 for ATZ hours.	

INTENTIONALLY BLANK