

EGBJ

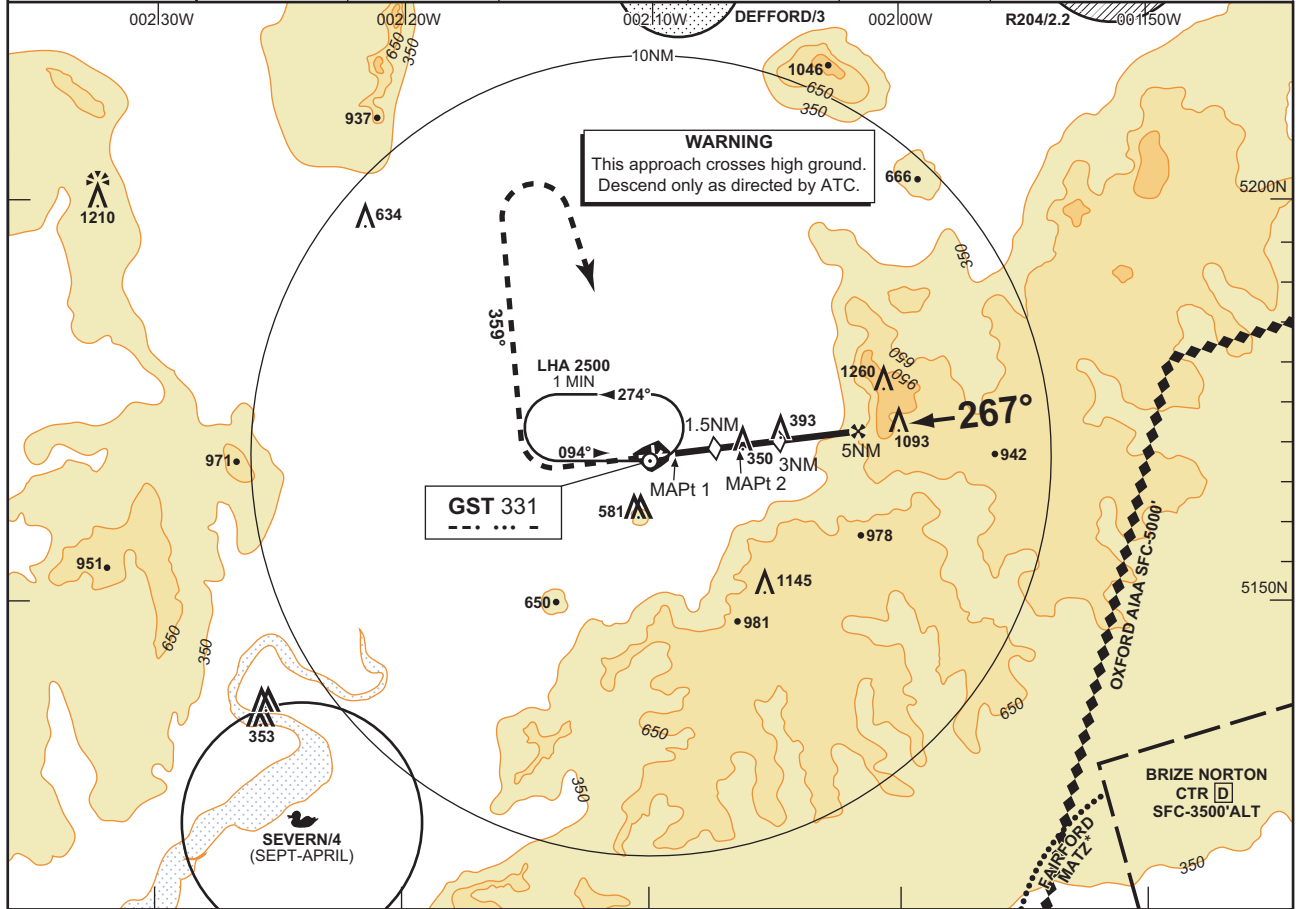
CAT A,B,C

GLOUCESTERSHIRE

SRA RTR 0.5NM/2NM RWY 27

RADAR 120.975

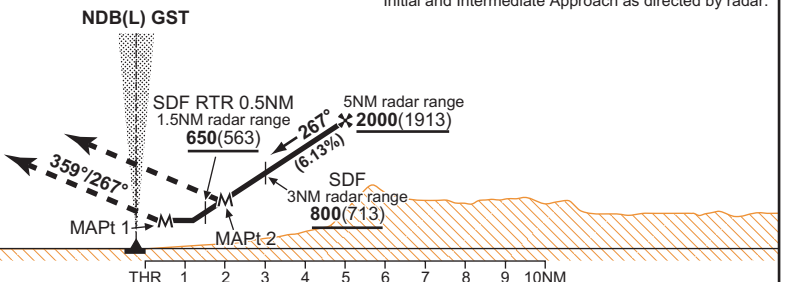
AD ELEV 101FT	THR ELEV 87FT	TRANSITION ALT 3000	VAR 3°W		
ATIS 127.475	APPROACH 128.550	RADAR 120.975, 128.550	TOWER 122.900	BRIZE RADAR* 124.275	



MAPt 1 (M) RTR 0.5NM

MAPt 2 (M) RTR 2NM

Climb on straight ahead to **1300(1213)**, then climbing turn right onto **359°M** climbing to **2500**, then turn right to NDB(L) GST at **2500**.



RADAR ADVISORY HEIGHTS		RATE OF DESCENT		OCA (OCH)		VM(C) OCA (OCH AAL)	
Gradient 6.13%, 373FT/NM		G/S KT	FT/MIN	SRA RTR 0.5NM	SRA RTR 2NM	TOTAL AREA	North of RWYs 04/22 and 09/27
NM	ALT/HGT			A	B	C	
5.0	2000 (1913)	160	990	520 (433)	650 (563)	1000 (899)	745 (644)
4.0	1630 (1543)	140	870	520 (433)	650 (563)	1000 (899)	745 (644)
3.0	1250 (1163)	120	750	520 (433)	650 (563)	1500 (1399)	
2.0	880 (793)	100	620				
		80	500				

- NOTES**
- Aircraft will normally be required to hold not lower than **4000** or the equivalent FL.
 - No missed approach turns permitted before MAPt.
 - Radar advisory ranges are referenced to RWY THR.