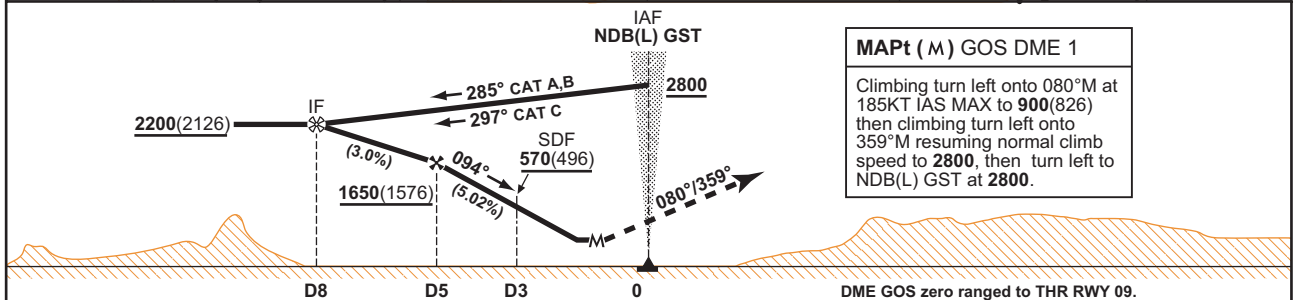
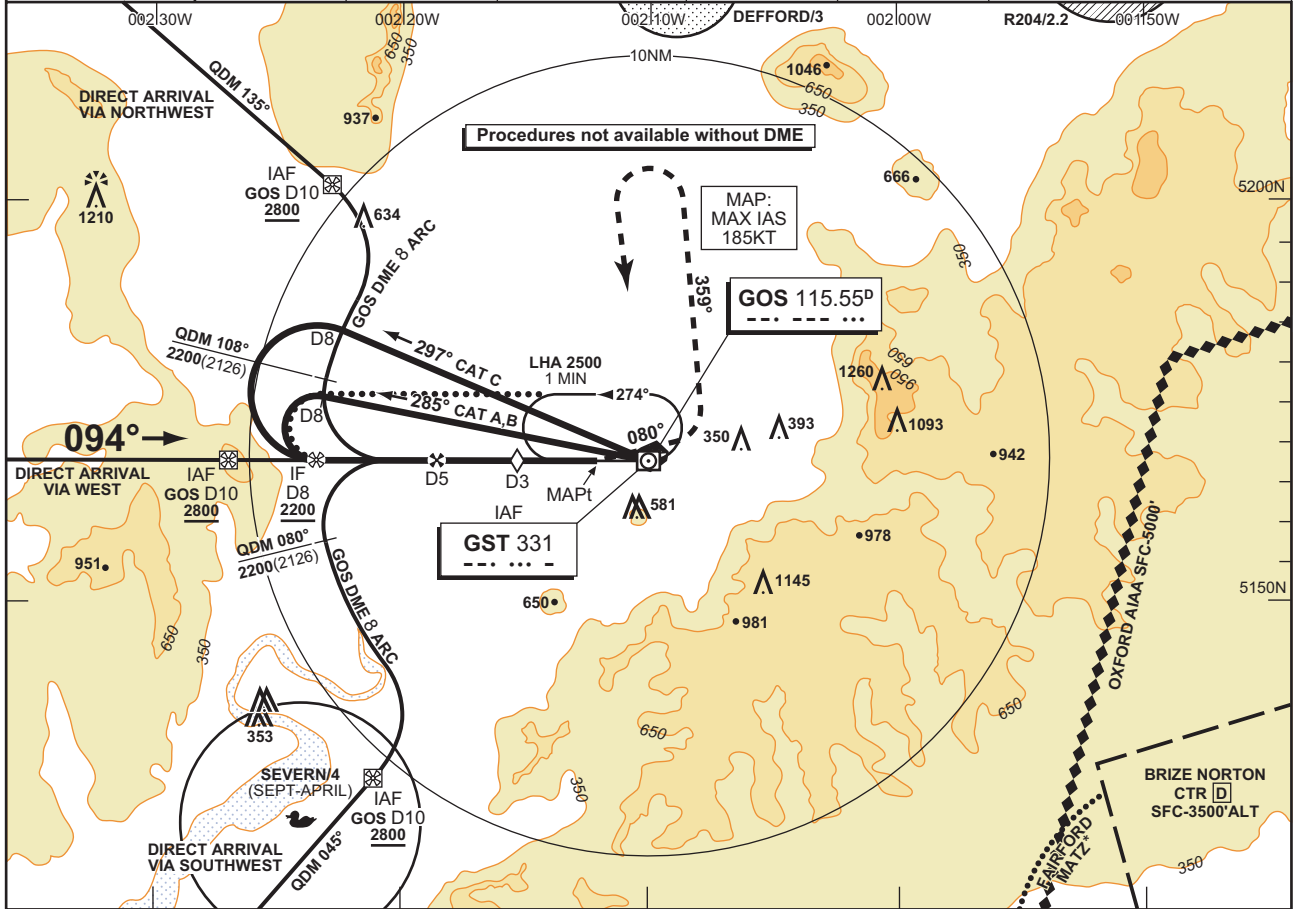


EGBJ
CAT A,B,C

AD ELEV 101FT	THR ELEV 74FT	TRANSITION ALT 3000	VAR 3°W
-------------------------	-------------------------	-------------------------------	-------------------

GLOUCESTERSHIRE
NDB(L)/DME RWY 09
GST 331/GOS 115.55

ATIS 127.475	APPROACH 128.550	RADAR 120.975, 128.550	TOWER 122.900	BRIZE RADAR* 124.275	
------------------------	----------------------------	----------------------------------	-------------------------	--------------------------------	--



RECOMMENDED PROFILE				OCA (OCH)		VM(C) OCA (OCH AAL)	
Gradient 5.02%, 305FT/NM				PROCEDURE		TOTAL AREA	
DME GOS	ALT/HGT	G/S KT	RATE OF DESCENT FT/MIN	A	B	C	North of RWYs 04/22 and 09/27
5	1650 (1576)	160	810	480 (406)	480 (406)	480 (406)	1000 (899)
4	1340 (1266)	140	710				745 (644)
3	1040 (966)	120	610				1000 (899)
2	730 (656)	100	510				1500 (1399)

ALTERNATIVE PROCEDURE EXTENDED HOLDING PATTERN
Extend the outbound leg of NDB(L) GST holding pattern descending to **2200**. At GOS DME 8 turn left to intercept FAT. When established continue as for Main Procedure.

- NOTES**
- FAT offset 6.5° from RWY C/L. FAT intercepts C/L nominally 0.8NM before THR.
 - Aircraft will normally be required to hold not lower than **4000** or the equivalent FL.