

EGBJ

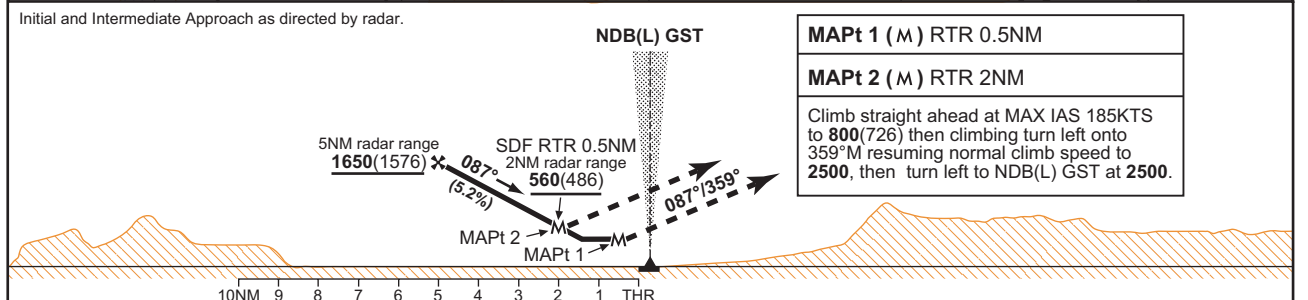
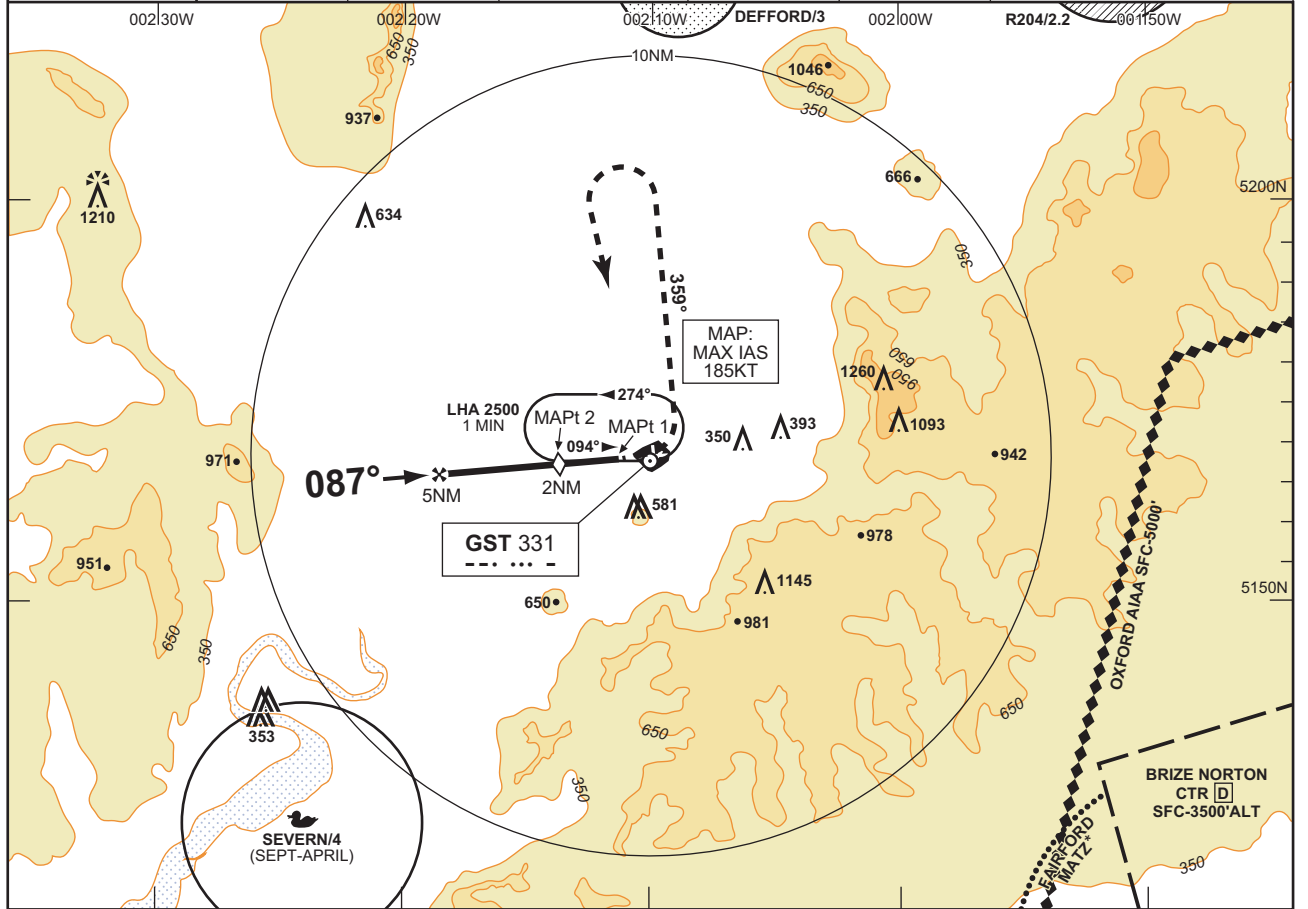
CAT A,B,C

GLOUCESTERSHIRE

SRA RTR 0.5NM/2NM RWY 09

RADAR 120.975

AD ELEV 101FT	THR ELEV 74FT	TRANSITION ALT 3000	VAR 3°W		
ATIS 127.475	APPROACH 128.550	RADAR 120.975, 128.550	TOWER 122.900	BRIZE RADAR* 124.275	



RADAR ADVISORY HEIGHTS				RATE OF DESCENT		OCA (OCH)		VM(C) OCA (OCH AAL)	
Gradient 5.2%, 318FT/NM		G/S KT	FT/MIN	SRA RTR 0.5NM	SRA RTR 2NM	TOTAL AREA	North of RWYs 04/22 and 09/27		
NM	ALT/HGT						A	B	
5.0	1650 (1576)	160	810	A	480 (406)	560 (486)	1000 (899)	745 (644)	
4.0	1340 (1266)	140	710	B	480 (406)	560 (486)	1000 (899)	745 (644)	
3.0	1030 (956)	120	610	C	480 (406)	560 (486)	1500 (1399)		
2.0	710 (636)	100	510						
		80	410						

NOTES

- 1 Aircraft will normally be required to hold not lower than **4000** or the equivalent FL.
- 2 No missed approach turns permitted before MAPt.
- 3 Radar advisory ranges are referenced to RWY 09 touchdown point.